

HORIZONS

GRACELAND

Yellowjackets Taking Center Stage

*Shining the spotlight on Gracelanders
in the entertainment industry*

Horizons (USPS 0884-8939) is published by Graceland University, Lamoni, Iowa. The magazine is distributed without charge to select alumni, faculty, staff, and friends of the University. Free copies are available upon request.

CONTACT US

Your feedback is always welcome!
Direct correspondence and address changes to:

Graceland University
Alumni Programs Office
1 University Place
Lamoni, IA 50140
866.GU4.EVER
alumni@graceland.edu

BOARD OF TRUSTEES

Michael R. Wiley, PhD, '83, *Chair*
LouAnn Muir-Hutchinson, MPH, '77, *Vice Chair*
Samuel G. "Sam" Smalldon, MBA, '78, *Treasurer*
Mike Seagraves, PhD, '94, *Secretary*
Joseph Booz, JD, '86
John Godfrey, MA, '06
Steven E. Graffeo, MA, '80
Ronald D. "Ron" Harmon Jr., MAR, '86
Gwendolyn Hawks-Blue '68
Emily Hughes, JD
Vincent E. Lewis, EdD
Jim Lysinger, MBA, '86
Aleksandar "Aleks" Memca '00
Randall E. Pratt, JD, '87
Julia Snethen, PhD, '82
Ryan Watson '77
Toyia K. Younger, PhD

ADMINISTRATION

Joel D. Shrock, PhD
Interim President
Shane Adams '99
Chief Marketing Officer
Talia Kinder '05 Brown, MEd
Chief Information and Data Officer
Kristi Hettrick '96
Vice President for Institutional Advancement
Beth Higdon, MA, '73
Executive Director for Planning and Effectiveness
Jennifer Matney, MA
Vice President for Business and Finance
Jacqueline McGlade, PhD
Interim Vice President for Academic Affairs and Dean of Faculty
David Schaal, EdD, '80
Vice President for Student Life and Dean of Students
Jodi Seymour
Executive Assistant to the President and Assistant Secretary to the Board of Trustees
Deb Knotts '85 Skinner, MSED
Vice President for Enrollment and Strategic Growth

ALUMNI BOARD OF DIRECTORS

John Godfrey, MA, '06, *President*
Peter Wilkinson '93, *Vice President*
Cathy Wolfe '88 Lysinger, *Secretary*
Kevin Brunner, PhD, '86, *Faculty Rep*
Wilai Rojjanasrirat, PhD, RN, IBCLC, *Faculty Rep*
Jenny Hendrickson '12 Bogda, MSED
Caleb Brian, PhD, '08
Jeremy Deemer '18
Dylan Fox '21
Ric Hettrick '74
Beth Higdon, MA, '73
Jen Ingram '96 Imhoff
Collin Isham '11
Allie Krabbenhoft '16 Kaminski
Jeff Martin '85
Chelsea McClain '05 Pierce, JD
Doug Roberts, MA, '01
Jonathan Schrale '11
Melissa Sherer '18
Blake Smith '16
Lisa Sheehy '80 Stobbe, MEd
Holly Inglehart '12 Weaver, BSN, RN
Cal Closson '82, *Alumni Board of Directors Emeritus*

EDITOR

Shane Adams '99

CREATIVE DIRECTOR & DESIGN

Tiffany Rider '06 Smith, MEd

PHOTOGRAPHY

Shane Adams '99
Steve Edwards, MS, '96
Tiffany Rider '06 Smith, MEd

CONNECT WITH US



Follow me:

  @GracelandUPres

The Performing Arts

Dear Graceland Alumni and Friends: I am honored to serve this esteemed university as its Interim President. I am so grateful for the faith of the Board of Trustees, and I look forward to working alongside them and the rest of the Graceland faculty and staff to further the University's mission of creating learning communities where students of all types can develop their potential for meaningful and productive lives.

I came to Graceland in 2022 to serve as the Vice President for Academic Affairs and Dean of Faculty after a long career at Anderson University in Indiana. I have spent my career dedicated to higher education and academia because I believe in its ability to transform lives. I joined Graceland because the University is future-oriented and clearly taking steps to be successful in the rapidly changing higher education marketplace. Liberal arts schools across the United States are closing because of their failure to innovate, but I am here precisely because I saw the incredible work President Draves and this community were doing to position the institution for ongoing growth. I look forward to continuing to build on that momentum in years to come.

Speaking of building things...in my work as the VP for Academic Affairs, I was able to regularly work closely with faculty members and academic program leaders as they engaged in the difficult work of modifying and streamlining curricula for a better student experience, but more excitingly, when they proposed new exciting programs for approval. This issue is dedicated to a program that we are extremely excited to announce – Performing Arts.

Graceland's Shaw Center is one of the most state-of-the-art performing arts facilities in the Midwest. And while support for the arts is waning in certain areas, the arts remain an extremely important part of our culture and what makes our country unique. Working with the talented performing arts faculty, a program was built that is distinctive, marketable, and academically efficient. While the full program curriculum will not be designed until the Fall of 2025, students can begin taking courses this year that will begin to count toward the new major.

Graceland has a long history of graduates with success in the arts, including many who are actively working in television, stage, and more. Read more about these talented Gracelanders on page 9.

I am thrilled to be serving as Graceland's president during this exciting time of growth at the institution. I look forward to continuing to meet you and work with you toward our shared mission of success in the future.

Joel Shrock, PhD

Interim President



Contents

on the cover & feature

YELLOWJACKETS TAKING CENTER STAGE

Imagine if the iconic Hollywood sign on another famous 'hill' overlooking Los Angeles spelled something different with the same number of letters. G-R-A-C-E-L-A-N-D looks pretty darn cool, right?! When Yellowjackets go out into the world, they are carrying the Graceland Experience forward in their chosen careers and lives, and this issue's feature story shines a spotlight on four alumni who have done just that. From Hollywood and beyond, Graceland is there making a difference.

-
- 4** The Buzz
 - 15** Academics
 - 20** Athletics
 - 23** University News
 - 28** Class Notes



"CHISEL AWAY"

Celebrating our most recent graduates with inspirational messages [and selfies]



DESTINATION VIETNAM

A spring break trip to remember for a delegation of Enactus students who had the opportunity to work on a special project made possible by the Graceland network



AN INSPIRED GIFT

A \$1 million gift expands scholarships for Community of Christ youth and funds future opportunities for church leaders



A Scholarly Day



☺ **Pictured, top row, left to right:** Speaker Ayman Husain '95 delivers a powerful presentation in the Newcom Great Room. Yasmin Yusman '24 gives an overview of her project on display in Morden Center. Harrison Sellars '25 participates in the student-led panel following Husain's keynote. **Bottom rows:** Students and faculty engaged in the day's activities and presentations across campus.



of Discovery

BY JENNIFER SMITH

When classes are canceled for the day but it's a struggle to choose between all the learning opportunities, that's when you know it's Graceland's **SCHOLARS' SHOWCASE**. In this April tradition, student scholars from all class years and academic disciplines present their work to the campus community and guests. The 2024 edition kicked off with a cup of coffee and light breakfast, a warm welcome, and an expert alumni speaker in Newcom Student Union. Ayman Husain '95, a seasoned technology professional now working in artificial intelligence (AI) at Google, gladly followed the invitation to return to his alma mater and took the audience on an exploration of generative artificial intelligence in the working world.

With his passion for all things AI, its business applications, and broader implications, Husain vividly illustrated how it can act as a catalyst for innovation, transformation, and success. Like any superpower, he emphasized, AI needs to be used with due diligence, competence—and for the good of technological advancement, social progress, and human development.

Tying into Husain's keynote, a student-led panel took up the topic of AI. In an insightful discussion round, the students zoomed in on personal experiences with AI and examined the individual's responsibilities when it comes to implementing the tools it provides in daily life, study and work.

Following those sessions, students spread out across campus. The program schedule was an impressive portfolio covering every interest area: business from sports to agriculture, economics, health, science and technology, sociology, psychology, history, education, arts and media production. Just as at every professional conference, the crowd experienced the agony of choosing which display, presentation, or demonstration to attend at what time slot in which building.

In the gymnasium, halls, and classrooms, student scholars proudly shared how they took a closer look, dug deeper, researched and developed, created and concluded. Their creative, scholarly and artistic work, community activities and case studies were inspired by coursework with their professors and mentors, their own biographies, social issues calling for attention and awareness, scientific or technical problems waiting to be solved.

Altogether, the 2024 Scholars' Showcase presented itself with 60 presentations, demonstrations, posters, readings/monologues and table displays. ■

Here are some examples:

Yasmin Mohammad Yusman '24 presented her research [with Prof. Nancy King, PhD, Social Sciences] on financial literacy, "an essential life skill that should be taught at school," she says. Yasmin surveyed the effect of financial literacy on the economic status of working adults from different socioeconomic backgrounds, appealing for financial education on the curricula to equip young generations with the valuable asset of knowledge they need now to thrive financially later.

The global efforts in the development of sustainable alternatives to conventional plastics was a call to scientific action for **Ybrahim Quevedo Eslem '24**. Detailing his lab setup and methodology [with Prof. Jeffrey Draves, PhD, Chemistry], he shared his findings on the incorporation of carvacrol essential oil into starch-based film packaging, demonstrating a real-life use case for carvacrol-enriched material as an eco-friendly packaging solution that can prolong food shelf life.

Dieter Horten '24 delivered a legal case study [with Prof. Sehwan Kim, PhD, Sport Management] from his home country Argentina, in which a prominent player sued his club for failure to meet contractual obligations. In a suspenseful match of arbitration, litigation, and business ethics, Dieter examined the various positions from the sports law perspective and chronicled how this local case turned high-profile with the involvement of the international soccer association FIFA.

Clara Cleland-Leighton '24 took the audience behind the theatre stage to experience the costume design process [with Prof. Karen Gergely, MFA, Art]. She stripped down the complexities of costuming, laying out her approach that is as multi-layered as the fabrics and material she uses: from the first inspirational collages and sketches over pattern studies to the sourcing, crafting and alteration of costumes that don't simply dress the actors but help them tell their characters' stories.

Ivan Hernandez '24 and Faith Adele Kincaid '24 were among the sea of graduates and loved ones posing for photos outside Morden Center following the ceremony.

“Chisel Away”

127th Commencement

BY SIERRA MARSHALL '21

Regardless of the time of year students walk across the stage, Commencement gives the University an opportunity to **CELEBRATE THE ACCOMPLISHMENTS OF ITS GRADUATES** and look forward to seeing the marvelous things these alumni will achieve in the future.

Graceland celebrated Fall Commencement on Dec. 16, 2023, at the Community of Christ Auditorium in Independence, Mo., as graduates from the School of Nursing, Community of Christ Seminary, and Gleazer School of Education joined by graduates of the Master of Science in Data Science and Analytics, and Master of Science in Nutrition and Human Performance programs proudly walked across the stage.

Katie Bruels, DNP, '18 delivered the commencement address. A distinguished graduate of Graceland's Doctor of Nursing Practice program, Bruels has held various leadership roles at Healthcare Corporation of America (HCA) for the past 16 years and now serves as Chief Nursing Executive for HCA Midwest Health. She emphasized the importance of practicing daily gratitude and striving to make a positive difference regardless of one's circumstances. She also encouraged graduates to define their happiness in their chosen careers and to recognize their ability to create a better work-life atmosphere.

Spring Commencement weekend, held April 27-28 in Lamoni, was full of memorable activities and remarkable individuals. The celebration began on Saturday with the Baccalaureate service,



Pictured, top to bottom: Katie Bruels addressed the graduates at the December ceremony. At Commencement in Lamoni, Bob Ackerley expressed how meaningful it is to be part of the Graceland community. David Seda closed his speech by saying, "You've all been very kind, thank you very much. Class dismissed."



flickr • View all Homecoming photo albums here:
[flickr.com/gracelanduniversity](https://www.flickr.com/photos/gracelanduniversity/)

during which two students were honored with the prestigious Student Life Award: GSG President Peyton Anderson '24 and COSA President Delaney Fox '24. Vice President for Student Life Dave Schaal, EdD, '80 acknowledged both recipients for their involvement in student government, house council, and various campus clubs, and for their significant contributions to the Graceland student community.

Sunday's commencement ceremony was a joyful occasion as students prepared to receive their degrees and join the ranks of Graceland alumni. This year's Spring Commencement speaker was David Seda, MA, '83, who has held prominent positions at Apple, Cisco, and other tech companies like Microsoft, where he currently leads Azure AI. Seda's speech was well-regarded by many, encouraging graduates not to be defined by their size in the world but to "chisel away" by asking the right questions and discovering their passions. He emphasized the importance of lifelong learning and assured the graduates that they were destined for greatness.

During the ceremony, Graceland also honored Bob Ackerley with an Honorary Degree. Ackerley and his family have been passionate supporters of the University, contributing to the outdoor track and endowing the prestigious Ackerley Scholarship for CSIT and Data Science majors. ■

What's Next?

The Horizons team asked these 2024 graduates about their plans and aspirations after graduation:

Bahati Nabindu

HOMETOWN: Thornton, Colorado
MAJORS: Criminal Justice & Psychology

"I am planning to attend the University of Denver to get my master's in Forensic Psychology."



Peyton Anderson

HOMETOWN: Lee's Summit, Missouri
MAJOR: Economics
MINORS: Data Science & Sport Management

"I will begin working for the Kansas City Royals in their Sales Department."



Samuel Johnson

HOMETOWN: Clovis, California
MAJOR: Biology

"I was accepted into the College of Veterinary Medicine at Iowa State University and will be attending to follow my dream of becoming a veterinarian."



Mackenzie Klinginsmith

HOMETOWN: Trenton, Missouri
MAJOR: Elementary Education (Music Endorsement)

"I will be teaching music at Lamoni Community Schools in the fall."



Calvin Hays

HOMETOWN: Blue Springs, Missouri
MAJOR: Business Administration & Economics

"I will continue working in Independence, Mo., as General Manager of Polly's Pop, one of the many companies owned by Ken '79 and Cynthia McClain."



Faculty Recognitions

Fall 2023

Alumni Award for Excellence in Teaching



Wendy Berdych, MSN, RN
Assistant Professor of Nursing

"I felt honored and completely shocked when I received the Alumni Award for Excellence in Teaching in my first year. I felt a strong connection and dedication to the amazing Graceland Nursing students, and I am so glad they felt that way towards me and my teaching style. Teaching our future nurses has been a lifelong dream, and I love my experience here at Graceland."

Spring 2024

Exceptional Service Award



Sehwan Kim, PhD
Assistant Professor of Sport Management

"I am deeply honored to receive this award. This recognition not only reflects my past contributions to Graceland and our students but also inspires me to deepen my engagement with the university community. Every day, I am reminded of the impact our collective efforts have on shaping the educational and personal growth of our students. Being acknowledged in this way motivates me to continue striving for excellence and to explore new ways to enrich our vibrant community."

Alumni Award for Excellence in Teaching & Excellence in Scholarly Achievement

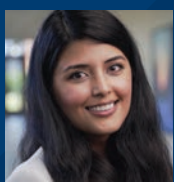


Ioseb "Soso" Gabelaia, PhD, '10
Interim Chair of Humanities, Assistant Professor of Business Administration

"As my name was announced, I walked onto the stage to receive the award for Exceptional Service and Excellence in Teaching. At first, there was disbelief! I could not grasp that this honor was truly mine. Then, a wave of pride washed over me, filling my chest with warmth, knowing that my dedication to scholarship and teaching had been recognized."

With each step towards the podium, I felt grateful for the support of my colleagues, especially students (my MVPs), who had made this moment possible. As I held the award, a deep sense of fulfillment settled in, affirming that my efforts had made a meaningful impact. Also, it was a reminder to continue investing in teaching and development to serve better. It was a genuinely humbling experience!"

Excellence in Scholarly Achievement



Iqra Shagufta Cheema, PhD
Assistant Professor of Humanities

"I am honored to receive this award for scholarly excellence, for institutional affirmation of my work. I'm grateful to the award committee members and the Graceland community for their support of my scholarship."

Read all commencement recognitions online: graceland.edu/Horizons

YELL
JACK
TAK
CEN
STA

LOW KETS ING TER GE

The *Horizons* team caught up with several Graceland graduates shining bright in Hollywood and beyond.



BY SHANE ADAMS '99

IN THE SPOTLIGHT The *Horizons* team received lots of submissions for who should be featured as a part of this story. There are so many talented Yellowjackets doing amazing things in the world of entertainment, but we have limited space. That said, if you have a great story you'd like to see in an upcoming issue, be sure to reach out to alumni@graceland.edu with your own Graceland tale to tell.



IF YOU'RE A GRACELAND GRADUATE, YOU KNOW THAT A FELLOW YELLOWJACKET CAN TURN UP EVERYWHERE YOU LOOK.

Our graduates go on to accomplish great things in a multitude of fields – from political science to business to education to medicine, alumni can be found around the globe in virtually every single industry. For this issue of *Horizons*, to celebrate the launch of Graceland's exciting new Performing Arts major, we sat down with a few folks who are actively working and succeeding in the challenging and constantly evolving entertainment industry.

Who We Spoke With

☞ Above, left to right:

David Yost, MA, '91

Best known for portraying Billy Cranston in the *Mighty Morphin Power Rangers* show and films, Yost is one of Graceland's most recognizable faces. His portrayal of the blue Power Ranger has spanned over thirty years, most recently in the Netflix 30th anniversary special, "*Mighty Morphin Power Rangers: Once & Always*."

Douglas Graves, MM, '91

Graves has been a sound designer and sound engineer on some of the biggest shows on Broadway, including *Wicked* and *Kimberly Akimbo*. He spent time at NBC as the sound mixer for the *Today Show's Morning Concerts* and has put out two albums as a recording artist.

Alissa Neubauer, MFA, '00

Neubauer worked for Warner Brothers and Chuck Lorre Productions for 18 years, including credits on *Two and a Half Men* and *Mom*. During her time with those shows, she served as a script coordinator, writer, co-producer, and co-executive producer. Most recently, she was the showrunner for *Call Me Kat*, starring Mayim Bialik.

Dave Hettrick '02

As perhaps one of the only Gracelanders to go through NBC's famous Page Program, Dave then worked on *The Tonight Show with Jay Leno* for a decade. He has produced for talk shows on Netflix and is a four-time Emmy winner as a producer for *The Kelly Clarkson Show*.



The first question we have to ask is, how did you get into “the business” from Graceland?

DOUGLAS GRAVES: Two Winter Terms in 1988 and 1990 were the start of me pursuing a career in theatre. My interest in composing music for plays, and in turn doing sound effects, was bolstered by Dr. Gary Heisserer, who had me score several shows. I went on to get my Master’s of Music Composition at Bowling Green State University. I returned to Kansas City to work as the mixer at The New Theatre in Overland Park before moving on to working at The American Heartland Theatre. In the fall of 1994, I began the sound design program at the Yale School of Drama. At Yale, I received my first professional sound credits from the Adirondack Theatre Festival. I also worked a summer at the famous rock club Toad’s Place in New Haven. I was pulled to New York City and ended up working at Sound Associates, who helped me get my first job on Broadway as an assistant sound designer on the play, *Wait Until Dark*, starring Marisa Tomei, Stephen Lang, and Quentin Tarantino.

ALISSA NEUBAUER: I first moved to Atlanta and worked as a technical recruiter living with a fellow Graceland alum. Before the year was up, the dot com decline caught up with our company and I was laid off. Completely unsure what to do with my life, and encouraged by a supportive dad, I decided that following my passion would be my next step. Getting my MFA in Film and TV Production at Chapman University – just a stone’s throw from Los Angeles – really helped to demystify Hollywood and to get me ready for my future career. In my second year at Chapman, I did an internship for a few days on the first season of *Two and A Half Men* and when they needed a Production Assistant (PA) for season two, they called me. I jumped at the chance to get coffee for some of the best comedy writers in the business. Little did they know that I would never leave. I stayed with Chuck Lorre Productions for 18 years and worked my way up from a PA who got coffee and lunch to a Writer/Co-executive Producer. Taking all that invaluable experience, I went on to be Executive Producer/Showrunner for Season 2 of *Call Me Kat* on

FOX. I would have never thought that a girl from Blue Springs who went to college in Lamoni, Iowa, could one day write on a network television show, let alone run one. But here we are.

DAVID YOST: I have always wanted to be an actor since I was seven years old. So, consciously and unconsciously, that was always my focus growing up. Even when I was at Graceland, I always knew in the back of my mind that I would move to Los Angeles and give it my best shot to become a television actor. So, like many hopeful actors, I moved to LA and started getting auditions. Within three months of being in the city, I landed an audition for a starring role on a TV show called *Phantoms*, which eventually was renamed *Mighty Morphin Power Rangers*. I had eight auditions over the course of six weeks and eventually landed the role of Billy, the Blue Ranger. I have starred in over 200 episodes, a feature film, and a Netflix special for the franchise, which has been a global phenomenon. Something no one could’ve predicted.

“

EVEN WHEN I WAS AT GRACELAND, I ALWAYS KNEW IN THE BACK OF MY MIND THAT I WOULD MOVE TO LOS ANGELES AND GIVE IT MY BEST SHOT TO BECOME A TELEVISION ACTOR.”

DAVID YOST, MA, '91

“MOM WAS SUCH AN IMPORTANT SHOW...THE IDEA THAT SOMETHING WE WERE PUTTING OUT INTO THE WORLD WAS HAVING SUCH A POSITIVE INFLUENCE WAS AMAZING. PLUS, WE GOT TO MAKE PEOPLE LAUGH.”

ALISSA NEUBAUER, MFA, '00

DAVE HETTRICK: After my junior year at Graceland, I got an internship in Los Angeles at Fox Sports in their Public Relations (PR) department. That was my first taste of not just entertainment, but big corporation, industry-type work. And it was great, but I realized I didn't want to do PR; I liked more of the creative production side. After I graduated, I moved to Texas and worked at Fox Sports in Houston, but that was all on the technical side. A year later, I got into the NBC training program – the Page Program – later made famous by the show *30 Rock*. And it was the exact same uniform that the character wears! The program is a one-year-long TV internship where you do a little bit of everything. You're an assistant, you give tours of the NBC lot, and you see everything the industry has to offer. By that point, I knew I wanted to work in production, and after the Page Program, I was able to get a full-time job with *The Tonight Show with Jay Leno*. I worked with him for nine years until he retired.

You are all so accomplished – what was your “holy cow I can't believe I graduated from Graceland and now I'm here” moment?

NEUBAUER: Probably the first time I went to The Emmys. I was working on *Two and a Half Men* as an assistant and we were nominated for Best Comedy. A few of the writers were unable to attend and my boss invited us to come in their stead. There was so much talent in one building, just being in that room was electrifying and inspiring.

GRAVES: I have several. My name is in the script for the play *Fully Committed*, since I was the sound designer for the premiere production at the Adirondack Theatre Festival. In the summer of 1997, I got to mix/sound design *An Evening with Jerry Herman*. So, for seven weeks, I got to work with the composer of shows like *Mame*, *La Cage aux Folles*, and *Hello Dolly*. When I was mixing *Wicked* on Broadway, we were fundraising for Broadway Cares Equity Fights AIDS and to get a certain auction item a higher bid, Joel Grey (*The Wizard*) offered to sing a verse and chorus of “Cabaret.” The goal was reached, the piano started, Mr. Grey just began to sing, and the hair on my arms stood up!



HETRICK: There are several from *The Tonight Show*, like walking around Hollywood with Mark Hamill for a day or even just getting to know Jay Leno. With the *Kelly Clarkson Show*, we've won four Emmys, which was definitely surreal since I was one of the few people who got to go up on stage to accept the award.

YOST: I have been blessed and fortunate enough to have landed on a television series that has had such amazing longevity. I am flown all around the world and I get to hear so many amazing stories from fans about how *Power Rangers* has influenced their life, even 30 years later. So my answer: it is a constant for me. I came from a small university in Iowa and now I'm so humbled by the enormous fan base my show has on a global level.

What is the thing you've done that you are the most proud of?

HETRICK: I think honestly it's the body of work, right? To come from Kansas City, then Graceland, and then to be selected for the Page Program when I knew absolutely no one in LA. There are only 30 people each year, and I got to be one. And then to have a 20-plus-year career in the industry – I'm very proud of that.

GRAVES: Theatre-wise, I feel that my involvement with the tour of *Fun Home* is something that was very important to me. It is such an amazing piece of theatre, and to share that around the country felt very sacred. Music-wise, I've put out two CDs, and I get the biggest kick when friends tell me that a track has popped up on SiriusXM Spa Channel.

YOST: I have a lot of things to be proud of ... as we all should. Sometimes just getting through a day can be something to be proud of. For me, I'm most proud that I came to terms with who I am as a gay person, albeit later in life and with great difficulty. I struggled for many years, and it took a nervous breakdown to bring me to my knees, but it got me to the place where I could stop pretending to be someone I wasn't. I'm proud of the man I have created in my truth.

NEUBAUER: The thing I am most proud of so far is my writing and producing work on all eight seasons of the CBS sitcom, *Mom*. *Mom* was such an important show – it showed how getting sober and overcoming addiction is possible and that recovery can change your life. We would have people come up to us and say that they went to their first AA meeting because of the show. The idea that something we were putting out into the world was having such a positive influence was amazing. Plus, we got to make people laugh.

What is one lesson from Graceland that you've applied to your work in Hollywood?

YOST: My time at Graceland was amazing in many ways. The lifelong friendships I created at Graceland stick with me the most. I learned what true friendship is and I am always able to fall back on many of those friendships to center me and keep me aligned when I can easily get caught up in the "game of Hollywood."

NEUBAUER: My classmates, professors, and coaches at Graceland were always kind, always ready to help, and really felt like a family away from home. As a showrunner, I definitely apply these values to my leadership style. Everyone who works for me is important, from the star of the show down to the person who gets the coffee, everyone deserves kindness and respect and I think this is something I carry with me from my days at Graceland. Well, that and some pretty good stories that inspired comedic scenes and jokes throughout my career, but I'm not sure the editors of *Horizons* or the school leadership would want me to share most of those. **Editor's note:** As one of Ms. Neubauer's close friends during her time at Graceland, this is a fact.

HETRICK: Even when I came here, I didn't feel overmatched. The English department was incredible – Jerry DeNuccio, Jon Wallace, and Barb [Hiles Mesle '72] – and Graceland is so diverse, which is unusual, I don't think people realize that. It helped me know how to talk to people from every different background. One of my good friends on Closson was from Nepal, one was from New Zealand. I got to interact with many people that I wouldn't get to at a different school.

This is a fun side story, but I got Michael Morain's *Gay Men's Chorus* to be on *Kelly Clarkson*. They were doing a concert last May where they were only doing Kelly Clarkson songs. And unknown to Michael or even me, they submitted it to one of the producers. Michael called me and we took it to the producing team and they loved it. We got all the video we needed and Michael and I were laughing afterward and saying, "That's the Graceland connection."



...GRACELAND IS SO DIVERSE, WHICH IS UNUSUAL. I DON'T THINK PEOPLE REALIZE THAT. IT HELPED ME KNOW HOW TO TALK TO PEOPLE FROM EVERY DIFFERENT BACKGROUND."

DAVE HETRICK '02

© Pictured, top to bottom: Alissa Neubauer celebrates filming the 100th episode of the CBS sitcom, *Mom*. Douglas Graves at the mixing console after a show. Dave Hettrick just casually taking a photo with Jay Leno. Lifelong friends Dave Hettrick and Michael Morain '01 catching up at The Dairy Cup in Lamoni.



© Pictured, top to bottom: David Yost alongside original black Power Ranger, Walter E. Jones for the Netflix special, *Once and Always*. Douglas Graves celebrates opening night of *Days of Wine and Roses* on Broadway.

“

I WILL ALWAYS GO BACK TO THE LIBERAL ARTS EMPHASIS OF MY TIME AT GRACELAND. I HAD A BIG ‘AHA!’ MOMENT MY JUNIOR YEAR...IT WAS THE DISCOVERY THAT ART/MUSIC/ ETC. DOESN’T HAPPEN IN A VACUUM. THERE IS SO MUCH THAT GOES INTO INFLUENCING THE ARTISTIC OUTPUT OF A PERIOD.”

DOUGLAS GRAVES, MM, '91

GRAVES: I will always go back to the liberal arts emphasis of my time at Graceland. I had a big ‘Aha!’ moment my junior year in Modern European history. I made the connection of how the politics of Europe in the early part of the 20th century influenced the music and theatre of that time. When I made that connection, because I had taken Music History my freshman year, it was the discovery that art/music/etc. doesn’t happen in a vacuum. There is so much that goes into influencing the artistic output of a period. So, when I was doing the Master of Arts in Religion through Graceland, and Dr. Chvala-Smith explained the exegetical process (the idea of lenses, audience, translation, etc.), the process spoke to me about theatre. How one tells a story to the public in a new way is what theatre is basically. Whether it’s a new piece or a piece that’s been done a thousand times, what is the voice that this group of artists is bringing forward at this time and place?

What are you working on currently?

NEUBAUER: I am currently working with the late Norman Lear’s production company and Sony Pictures Television to sell a new sitcom idea. We are out pitching the show and looking for a buyer in the streaming world. Coming out of the writers’ and actors’ strikes last year, the market has been tight, but it’s a great pitch and we hope to get a buyer. Time will tell.

GRAVES: In August, I’ll begin helping to prepare the national tour of Kimberly Akimbo, and I’ll be helping to launch it with the sound team. The official opening is in Denver, September 27, 2024.

HETRICK: So, I just left the *Kelly Clarkson Show* and am now working at Silver Tribe Media helping to produce podcasts for several athletes. I help produce Shannon Sharpe’s “Club Shay Shay” which gained notoriety recently as his interview with Katt Williams became one of the most-watched YouTube interviews of all time. But I produce for several different shows, including [NBA player] Draymond Green’s.

YOST: Most recently, I spent three months working in New Zealand filming the 30th Anniversary special for the *Power Rangers* franchise entitled, *Mighty Morphin Power Rangers: Once and Always*. From there, I stayed on and starred in the 30th season of *Power Rangers*, which is entitled *Cosmic Fury*. Both projects currently stream on Netflix. I have also been working on some of my own projects and I am currently trying to sell a TV series I created entitled *Common Terry*. It revolves around a former investigative journalist turned college professor who, along with two of his students, have been enlisted by an otherworldly being named Max to save planet Earth from a hostile alien takeover. It’s a sci-fi, dark comedy, thriller.

Thank you to all of you for being a part of this story. Your successes are incredible, and we are so fortunate to call you Graceland graduates. Blue and Gold forever! ■

New Programs, Future Focus

Stage, Screen, and Study: The New Performing Arts Degree

BY SHANE ADAMS '99

Theatre and music at Graceland have always been unique, and this fall, students will be able to enroll in Graceland's newest foray into this field, a completely new major called **PERFORMING ARTS**.

Overture

Performing arts have been a part of Graceland's history since the early days of the institution. The Dramatic Club was established in 1909, but it was two years earlier in 1907 that the first play was staged on campus, a production of *Esmerelda* directed by Alice McGrath. Through the years, theatre, music, and drama ebbed and flowed in their presence on the Lamoni campus, championed by celebrated Graceland professors like Win Inslee, Celia Schall, and Oliver Houston, the first chair of the Division of Fine Arts.

While the music department dates back to 1895, students could not major in music until 1972 and in theatre (as "speech and drama") until 1973. The lack of major never stopped Gracelanders from performing, and groups such as the Graceland Players (earlier called the "College Players") promoted interest in dramatic art over the years.

"This program takes traditional performing arts roles and melds them with new technologies, while also giving students a chance to discover their own artistic vision and skills."

PARKER WORDEN
Director of Bands



© Samuel Clarkson '27 and Alissa House '25 perform a scene in *The Glass Menagerie*, directed by Assistant Professor of Theatre Cara Phipps this past November.

Setting the Stage

Graceland is fortunate to have one of the most advanced and beautiful performing arts facilities for a school its size. Since it opened in 1982 and was renovated in 2012, the Shaw Center for Performing Arts continues to be a hub for activity, both for Graceland musicians and performers, but also for student activities. Over the years, the Shaw Center has hosted incredible events from both visiting artists and student performers.

Its versatility as a performance location gives students an advantage, especially with this new major. Visual and Performing Arts Department Chair Kimberly Manuel '01 said, "The Shaw Center is the perfect facility for our Performing Arts students because we have a recital hall, auditorium stage, and black box theatre all in one place. Each space gives our students the opportunity to perform and work in very different environments, which gives them a competitive edge to other programs."



“Most theatre and music programs are cookie cutter representations of how theatre and music has been and will continue to be taught, but with the changes to the industry, the way we train and educate our next generation of artists needs to change. This new program embraces that change.”

KIMBERLY MANUEL, MFA, '01
*Visual and Performing Arts Department Chair,
 Assistant Professor of Theatre and Design*

A Modern Approach to the Arts

The University's central location positions it in place to serve as a community outlet for the arts, and the industry is changing rapidly. Manuel said, “The future of performing arts was not being represented in the most recent iterations of our majors being offered, so we had an opportunity to be a leader in implementing the change needed in the entertainment industry.”

Director of Bands Parker Worden continued, “The world of performing arts is changing radically with the spread of social media and new technologies like artificial intelligence (AI). This program takes traditional performing arts roles and melds them with new technologies, while also giving students a chance to discover their own artistic vision and skills.”

Areas of Concentration

The new program offers three concentrations that represent the three areas essential in the entertainment industry:

DRAMATIC MEDIA

is a hybrid of theatre, film, and new media that will focus training in areas of design, directing, and technology.

BUSINESS AND ENTREPRENEURSHIP

is designed for students who want to be music producers, agents, artistic directors, executive directors, and leaders in the entertainment industry.

PERFORMANCE STUDIES

is designed to train students in both music and theatre performance.

Know a student who might be interested? Send an email to admissions@graceland.edu and they'll make sure they hear about it!

The design of the new program was a collaboration across the department and Manuel believes there is no other performing arts program like it in the country. “Believe me, I've tried to find one like what we've designed. Most theatre and music programs are cookie cutter representations of how theatre and music has been and will continue to be taught, but with the changes to the industry, the way we train and educate our next generation of artists needs to change. This new program embraces that change.”

Students have the freedom to select courses within each concentration. Whichever concentration they choose requires the foundational elements of the Performing Arts major, including a course in career planning and professional development.

Worden is excited, saying, “In other programs, students tend to focus on one traditional aspect of performance study. This program gives students an opportunity to study music and theatre in ways that bridge traditional performance study with modern outlets and opportunities.”

Despite its innovativeness, alumni should feel confident that the traditions they've grown to love about Graceland performances will not be abandoned. “The legacy of the music and theatre programs will continue to be a cornerstone of this new program,” said Manuel, whose own experience at Graceland brought her back to now leading the department. “We will never forget who we were, what the Graceland experience was like for us, and as we move forward with the new Performing Arts program, we will remain true to the brilliant faculty who carved the path for us.”

THE END. ■

CSI Lamoni: Probable Cause for Success

BY JENNIFER SMITH

Associate Professor of Psychology Nancy King and Assistant Professor of Criminal Justice Matt Schneider had a growing suspicion last year. They set up a task force, followed clues, spoke with informants, gathered evidence, conducted a motivational analysis, and finally made their case: for a new undergraduate focus in **FORENSIC PSYCHOLOGY**.

Making the Case

The idea emerged from student feedback out of the popular criminal justice program that had also picked up several psychology majors, leading to many double majors by students seeking to combine both disciplines. As is a Graceland trait, the professors responded to the demand and brought the new program proposal to be tried by a jury of its peers.

There was no doubt about its huge potential. At the same time, technically, it was an almost organic transition, blending existing curricula and resources, so the proposal quickly moved through all approval levels from the Graceland Innovation Committee and Faculty to Executive Council and Board of Trustees.

“I want to be in forensic psychology because I’ve always been really interested in how the mind works behind the crime. I can already see all of the connections and opportunities this program will bring me in the future.”

ALISSA CARUSO '27



Forensic Psychology is rapidly establishing itself beyond the intersection of criminal justice and psychology as a driving force in its own right, advancing both areas of expertise as well as the judicial system it serves and reforms.

An Elite Program

It is a challenging field that requires rigorous training from the start. Mirroring the high academic standards in furthering graduate studies and the competitive professional environment of potential future employers such as the FBI and Homeland Security, the Graceland program will challenge students to excellence, as well – they must maintain a GPA of 3.5 in their coursework.

The degree rewards them by uncovering a wide field of exciting career opportunities, preparing them for roles such as victim advocate, expert witness, criminal profiler, consultant or counselor in courts and corrections, forensic social worker, detective and investigator, intelligence analyst or criminal psychologist.

We look forward to putting the word out about this arresting addition to the Social Sciences division, recruiting future students, and welcoming the very first forensic psych cohort in the fall. ■

The Graceland Advantage

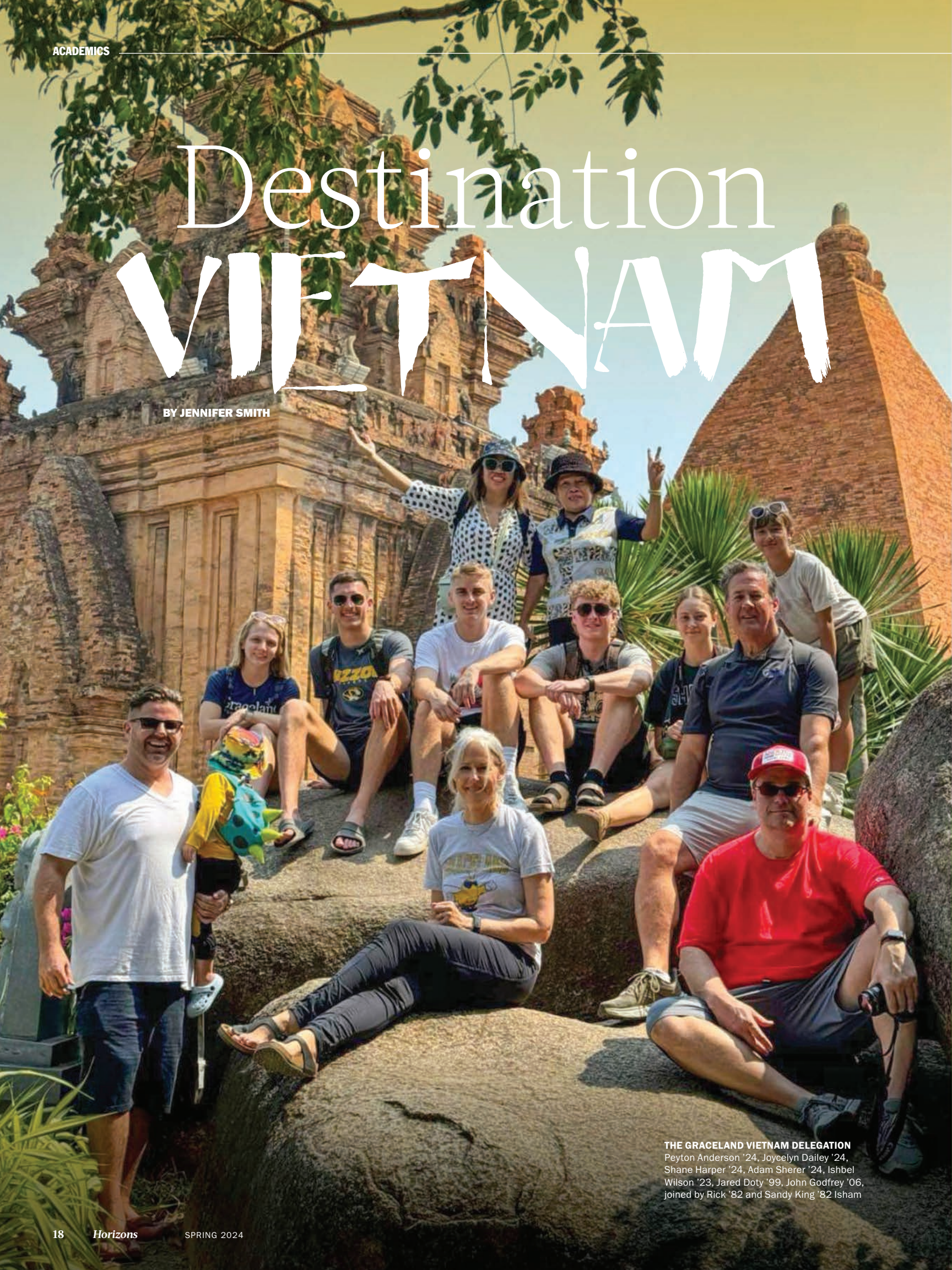
Graceland is one of only a few schools in the nation to offer this undergraduate degree, and one of even fewer offering it on-site in a face-to-face setting.

📱 Scan the code to view a video introduction to the new Bachelor of Arts: Forensic Psychology in the *Academic Programs* playlist on Graceland's YouTube channel.



Destination VIETNAM

BY JENNIFER SMITH



THE GRACELAND VIETNAM DELEGATION
Peyton Anderson '24, Joycelyn Dailey '24,
Shane Harper '24, Adam Sherer '24, Ishbel
Wilson '23, Jared Doty '99, John Godfrey '06,
joined by Rick '82 and Sandy King '82 Isham

The group of Graceland students didn't take long to make the national news. One moment, they were settling in for lunch at a restaurant in Nha Trang where a reporting team was visiting, and the next, they found themselves demonstrating to the viewers of channel VTV9 how banh mi (short baguette-style bread) was traditionally baked in clay ovens. It was one of many unexpected moments that turned into lasting anecdotes from the **FIRST ENACTUS PROJECT TRIP TO VIETNAM.**

Within the Enactus framework, Jared Doty, MBA, '99, Director of the Sandage Center for the Study of Free Enterprise and Entrepreneurship, is always scoping out new projects for his students. The deliverables need to be realistic and doable, allowing students to turn entrepreneurial action into a sustainable difference for communities around the globe. This sometimes means having to decline projects due to geopolitical or infrastructural challenges, but everything fell perfectly into place with a project partner in Vietnam.

Doty was in touch with John Godfrey '06, Graceland's newest Alumni Board of Directors President, who has a personal connection to Vietnam through his partner Tammy Nguyen. In their conversations, the idea crystallized to support Tammy's cousin with one of the many family-run small businesses that make up the tourism landscape there. The cousin hopes to attract U. S. American visitors to a region that is not yet at the top of their travel list – and a destination marketing project was born.

Against the time restraints of spring break, Tammy's local knowledge and network made it possible to maximize the 10 days the students were in country and provide a memorable learning experience for both sides. The Graceland project team took on the role of business consultants, first going through the tourist experience first-hand, then translating that experience into a target market analysis, and finally collaborating with the client on tailored marketing and promotion toward future customers.

From the bustling urban centers to the quiet beaches, Vietnam offers welcoming people, stunning scenery and an overall great travel deal for the dollar, but it is not easy to get to or navigate once you get there. Initial information is rather generic and superficial, featuring pretty stock photos but lacking original and specific content needed to plan and execute a trip.

To make Vietnam more accessible and help the agency cater to customer needs, the students looked at aspects such as mobility and transportation, safety, culinary delights and dietary options, hotel and public facilities, prices and modes of payment, technology and local app usage, and social conventions. They learned the intricacies of intercultural communication and how to adapt to the steady stream of motorbikes to safely cross the road, located photo opportunities, pinpointed good restaurants and restrooms, and identified historical sites that would appeal to one type of traveler or adventure activities to another type of traveler. All to collect the little pieces of the Destination Vietnam story they will now be telling with the project partner, who maybe someday will welcome you there! ■

☺ The group of students proudly show off their banh mi loaves of bread outside Nha Trang restaurant.

“This was a true one-of-a-kind, immersive experience! The opportunities we had, especially with Nha Trang University, were unlike anything I've ever done. The people we met and places we went were true learning experiences I'll never forget.”

ISHBEL WILSON '23



Front: Brooke Marko '27,
Mickenzie Fisher '25,
Carleigh O'Dell '25.
Back: Velia Castillo '27,
Cadence Sires '27,
Coach Kat Albertson,
Bryce Clausen '25.



In Our Dance Era

Graceland Gadets Make Historic Debut at Nationals

BY GEORGIA SEAGRAVES, MS, '21

For the first time, the dance team not only stepped onto the national stage at the prestigious NAIA National Dance Championships, but also **DANCED TO A REMARKABLE 7TH-PLACE FINISH**. Under the enthusiastic guidance of first-year coach Kat Albertson, their achievement marks the dawn of a promising era of excellence for the dance team.

A New Era Under Coach Albertson

Kat Albertson's journey in dance is as dynamic as her coaching style. Competing from a young age and leading her college team at Central Michigan, Albertson's passion led her to a successful stint coaching at her high school alma mater. When the opportunity at Graceland arose, she saw a chance to make a significant impact. "I was drawn to the role at Graceland because it was a chance to build a program from the ground up," Albertson shared.

Her coaching philosophy is simple yet profound: "Relationships and positive leadership come first. I'm competitive, don't get me wrong, but I put people first. Watching them grow as individuals is my top priority," she explained. This approach has reshaped the team's dynamic, fostering a supportive and ambitious environment.

The Road to Nationals

The journey to nationals was no small feat for this spirited squad. Despite being newcomers on the national stage and often starting competitions with the disadvantage of performing first, the team's dedication to setting clear, achievable goals and developing habits to support these objectives played a pivotal role in their success. Coach Albertson emphasized the importance of regular goal-setting and reflective practices, such as journaling after each practice to evaluate progress and adherence to their set habits. This structured approach enhanced their performance skills and fortified their mental resilience, enabling them to advance to NAIA Nationals – an accomplishment never before achieved by a Graceland dance team.

The team was required to master intricate routines blending 30 seconds each of pom, jazz, and hip-hop styles, culminating in a compelling and technically challenging performance. "We tweaked our dance after every competition, learning and improving together as a team," Albertson noted. Their persistence paid off, earning them a 10th-place rank nationally at the end of their season and a spot at nationals, where they impressively finished 7th out of 12.

Coach Albertson credits much of their achievements to the team captains Bryce Clausen '25 and Carleigh O'Dell '25, third-year members who provided crucial leadership. Their ability to mentor and support the younger members was vital in navigating the season's challenges. Albertson also emphasized the incredible encouragement the team received from Graceland Gadets alumni. "The support from alumni and our community has been incredibly moving. Their encouragement has made this experience even more special," Albertson gratefully acknowledged. The team also engages with supporters through their active Instagram account, sharing updates and behind-the-scenes content.

Looking Forward

As the Graceland dance team looks to the future, their sights are set not just on maintaining their competitive edge, but on continuing to build a program that values growth, unity, and excellence. This historic journey to the nationals is not just a testament to the team's hard work and dedication, but also a beacon of what's possible under leadership that values both personal growth and competitive success. The Graceland University dance team is leaping into a promising future, and they're just getting started. ■



Coach Kat Albertson eagerly awaits the scoring to be announced after the team performed at nationals.

Co-captain Carleigh O'Dell '25 shines for the crowd gathered at Morden Center to send the team off to nationals.

7th
PLACE FINISH
NAIA NATIONALS



Follow [@gracelanddance](https://www.instagram.com/gracelanddance) on Instagram to stay connected!





“My hope is to have Graceland compete on the national stage as well as mentor our amazing young men to achieve great things on and off the court. I want our alumni to be very proud of our performance on the floor. Graceland played a very important role in my life, and my goal is for our student-athletes to feel the same.”

A Familiar Face Returns to Graceland Men's Volleyball

BY CAITLYN STUPAK '19

Athletic Director Brady McKillip '00 announced the hiring of **ERIC MAJORS '97** as Head Coach for the men's volleyball program.

Majors' return to Graceland, where he was a standout player and coach, follows a successful stint as Assistant Coach for the Drake University Women's Volleyball team. At Drake, he directed scouting reports and created game plans while serving as the primary blocking coach and offensive coordinator.

Prior to Drake, Majors was the head coach at Avila University, the Associate Head Coach at McNeese State University, and served at Graceland in the early 2000s both on the men's and women's teams.

During his time at Graceland, Majors helped the Graceland men's team complete its most successful season in recent memory by winning the MAVIC West Conference tournament (2011-12) and qualifying for NAIA Nationals for the first time in school history since the NAIA restored an Invitational Championship in 2009. Majors directed the offensive attack for the women's varsity team and helped guide them to their best finish in seven years by finishing 2nd in the conference and 2nd in the Heart of America Athletic Conference tournament (2012-13). Majors was named "AVCA/NAIA Midwest Region Assistant Coach of the Year" for his efforts.

On the club side, Majors spent time with the Texas Tornadoes Volleyball Club where he served as head coach of the 18 and 11 Mizuno. He guided the 18 Mizuno to the USAV Nationals with a bronze medal at the Mid-East National Qualifier and finished with the Houston Shootout in third place out of all teams in Houston. His 11 Mizuno team ranked in the Top 3 in Houston.

Majors also directed Sandshark Volleyball Club in Kansas City from 2006-2014. The Sandshark successfully qualified 50% of its teams to USAV Junior Nationals (one of the highest ratios in the heart of America Region). He trained numerous players who have gone on to be primary contributors in their collegiate careers.

As a men's volleyball player at Graceland in the mid-1990s, Majors was a middle blocker for teams that finished 2nd, 5th, and 9th at the NIRSA Collegiate nationals, while being named to the MIVA all-tournament team his senior season. ■

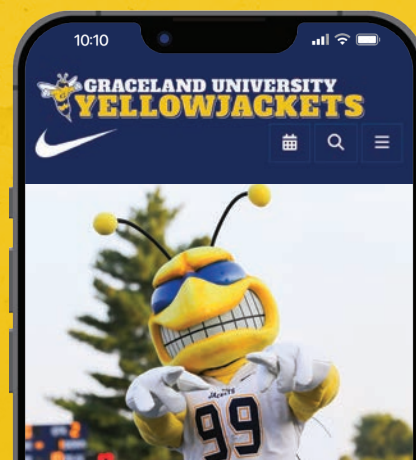
Wanting
to keep
up with the
Yellowjackets?

GUJACKETS.COM

Scan this code
or check in on
GUJackets.com
for schedules,
rosters, news,
and more!



**Graceland Football Alumni
should mark your calendars for
the Association's Ring of Honor
Ceremony on Sept. 14, 2024,
in Newcom Student Union.**



An Inspired Gift

Kathy and Joel Ross Inspired Leadership Fund Established

The **\$1 MILLION GIFT** from Kathy and Joel '79 Ross expands Wallace B. Smith Scholarship for Community of Christ youth and funds future opportunities for church leaders.

This remarkable donation will significantly enhance opportunities for students and further the University's mission in several meaningful ways. Joel currently serves as a member of the Presidential Advisory Council, and Kathy was named an honorary alumna in 2014. A substantial portion of this gift will be used to fund the Wallace B. Smith Scholarship in partnership with Graceland. These scholarships, affectionately known as "the Wally B.," are awarded annually at SPECTACULAR, the Community of Christ youth camp hosted by Graceland each summer. The scholarships aim to support and encourage young leaders within the Community of Christ and, with the generosity of the Ross family, will fund two full-tuition scholarships and four half-tuition scholarships.

Vice President for Enrollment and Strategic Growth Deb Skinner, MEd, '93 said, "Wallace B. Smith '48 was the definition of a transformational leader within Community of Christ. It is so exciting that we are able to honor his legacy of leadership with these expanded scholarships for Community of Christ youth. Previous Wallace B. Smith award winners have gone on to do amazing things while students at Graceland, in the church, and in their professional lives. This premier scholarship displays our commitment to ensuring youth within the church have access to a Graceland education."

In addition to the scholarship, the Inspired Leadership Fund includes an allocation to Graceland's general student welfare fund, administered by Campus Ministries, ensuring broader support for the diverse student body. Further, it supports internships specifically for Community of Christ youth, providing valuable real-world experience and preparing students for successful futures.

Kristi Hettrick '96, Vice President for Institutional Advancement at Graceland, expressed her heartfelt gratitude for the Ross' generosity. "We are incredibly grateful to Kathy and Joel Ross for their unwavering support of Graceland. Their gift will have a lasting impact on our students and the entire Graceland community. This donation exemplifies the spirit of giving that helps make our university a place where students can thrive."

Since its founding in 1895, Graceland has remained a nonsectarian institution sponsored by Community of Christ (Reorganized Church of Jesus Christ of Latter-Day Saints when founded). This partnership has impacted generations of servant leaders through the years. Community of Christ and Graceland have always been closely intertwined, with many Graceland graduates going on to leadership roles within the church.

Counselor to the President and Prophet-President Designate Stassi Cramm '03, expressed her gratitude and excitement for the gift, saying, "We look forward to witnessing the positive influence these scholarship recipients will have on the church's mission and the wider world." - **BY SHANE ADAMS '99**



"We believe in Graceland's mission and its commitment to nurturing future leaders. Our hope is that this gift will not only inspire more young leaders in the Community of Christ to choose Graceland for the supportive community they will find there, but we also hope to inspire the generosity of other alumni and friends to donate to Graceland in ways that are meaningful to their own lives."

KATHY & JOEL '79 ROSS

Mental Health Matters

BY ANGELA SLOSARSKI

Mental health is as important as physical health to student success and overall well-being. That's why Graceland has embraced a transformative approach, advancing mental health services to meet the evolving needs of a new generation of students. With the integration of advanced telehealth solutions like *Uwill* alongside traditional counseling, Graceland is **SETTING NEW STANDARDS IN STUDENT CARE AND SUPPORT**, ensuring every student has the resources they need to thrive, both academically and personally.

In response to a growing need for accessible mental health care, Graceland University proudly launched the ***Uwill* telehealth platform** this year. Already, 60 students across both campuses have registered, tapping into its flexible and comprehensive support system. *Uwill's* appeal lies in its adaptability – offering remote access for distance learners in Graceland's online programs while complementing traditional in-person counseling services for on-campus students. The platform's capability to offer counseling that aligns with students' specific personal preferences is particularly valued, reflecting Graceland's commitment to personalized care. This flexibility and ease of access are crucial steps toward ensuring that effective mental health support is readily available for every student.

The expansion of these services has been enhanced by the generosity of our alumni. Among them, Mary Stowell '72 Fry, PhD, LCPC, RPT-S and Robert "Bob" Fry, DDS, '70 stand out for their deep commitment to the welfare of our students. Moved by global trends in youth mental health challenges, Mary, leveraging her two decades of experience as a counselor educator, has contributed significantly to Graceland's mental health resources. Her pledge supports not only the broadening of services but also ensures that these services

effectively meet the varied and specific needs of our diverse student population. Mary shares why she's driven to support mental health efforts at Graceland, speaking from both personal insight and strong conviction:

"According to the World Health Organization, depression, anxiety, and behavioral disorders are among the leading causes of illness and disability among adolescents, and suicide is the fourth leading cause of death among 15-29 year olds. As a counselor educator in a university setting for over 20 years, I feel compelled to help address those needs at my alma mater. I realize that for most college students, this is their first experience living away from their families. It is my hope that Graceland will address these emotional needs through an increase in student counseling services."

Supporting Mary's vision is alumna Lisa Prosser-Dodds, PhD, '81, the University's lead mental health specialist, whose expertise has been instrumental in shaping effective, empathetic care on campus. Under her guidance, counseling services have grown not only in scope but also in depth, offering everything from one-on-one counseling to group therapy sessions.



TUNE IN TO THE PODCAST

During the school year, new episodes upload weekly on Monday nights, or you can listen to the podcast nightly at 8 p.m. on KBUZ Radio. Scan the code or go to gracelandbuzz.org/kbuzplayer



Graceland University remains committed to supporting the mental health of our students, and continues to refine and enhance services, ensuring every student benefits from resources meeting their unique needs.

Feedback from the student body underscores the positive impact of these enhanced services. Many students have expressed a newfound sense of being supported, highlighting how this has improved their overall well-being and academic performance. Complementing these services, the **'Mental Health Matters' podcast**, hosted by Dr. Lisa and students Cyril "Ivan" Joseph '26, and Jordan Meyer '25, serves as an additional resource, discussing important mental health topics and offering insights that enhance students' understanding and management of their mental health.

Graceland University remains committed to supporting the mental health of our students, and continues to refine and enhance services, ensuring every student benefits from resources meeting their unique needs. Through the dedication of our alumni, the expertise of our mental health professionals, and innovative initiatives like *Uwill*, Graceland creates an environment where mental wellness is a fundamental aspect of our educational approach. Looking ahead, we remain focused on empowering students with the tools they need for academic and personal success, affirming our commitment to an education that truly supports every aspect of student life. ■

A Monumental Upgrade



#GracelandGrad Melody Alo '24 poses in front of the refreshed monument in celebration of earning a degree in Sociology and Psychology with honors.

LASTING IMPRESSIONS Signage is so foundational and important by creating a positive touch point for visitors to campus. The monuments coming into Lamoni along Highway 69 were also refreshed, and Graceland's signage at the Independence campus and at the SkillPath building in Mission, Kan. were updated recently as well.

The most recent class of Graceland graduates had new and improved spots to snap photos in their caps and gowns this spring. In early April, as the semester was winding down and just in time for Commencement festivities, both monument signs on the Lamoni campus were upgraded as part of the University's ongoing brand initiative.

Graceland's Marketing team partnered with Kansas City-based Midtown Signs to repurpose the existing brick and stone framework and replace the outdated logo treatment on the aluminum faces, bringing the signage current with the new logo. The signs flank both sides of campus at key points of entry – one up the hill from Founders Lake along College Avenue and the other adjacent to The Helene Center for the Visual Arts at the corner of University Place.

One of the central efforts of Graceland's *Blue, Gold & Bold* Strategic Framework is a focus on increasing the visibility and awareness of the University. Along with the national brand campaign, this also means addressing high impact areas like campus signage to effectively reinforce the Graceland identity and extend a sense of welcome and pride to anyone who steps foot on campus, or even just passersby.

Not only do the monuments now reflect the University's current logo, but they provide a backdrop for recruits, students, and alumni to take meaningful snapshots, and in the age of social media, extend Graceland's reach by sharing these images with their friends and followers. These unofficial "brand ambassadors" showing their connection to Graceland is a true marketing win.

Next time you visit campus, we invite you to strike a pose and snap a photo of your own, then share on social media and make sure to tag us! – **BY TIFFANY SMITH, MEd, '06**



Kathryn Minton
presents the check
to Jolene Lynn.

“An education endowment has been a goal of the Health Ministries Association for many years and it was our honor to give those funds to Graceland University [School of Nursing] as the well-deserved recipient.”

KATHRYN MINTON
Health Ministries Association

Former School of Nursing Dean Jolene Lynn, PhD, stated, “The endowment funding will help students achieve their goal of becoming a Registered Nurse, and I am beyond grateful that the association picked Graceland to carry on the Health Ministries legacy through this scholarship.”

Kathryn Minton, one of the HMA members, said, “Health Ministries Association is proud of its past accomplishments in providing health and education to thousands of recipients over the last 47 years. Because of the dedication of members, donors, and the HMA Board of Directors, HMA was able to provide a \$100,000 endowment to the Graceland University School of Nursing. An education endowment has been a goal of HMA for many years, and it was our honor to give those funds to Graceland University as the well-deserved recipient.”

Graceland University is grateful for the HMA's years of partnership and is grateful to carry on its legacy. Through the endowment, the School of Nursing can increase access to qualified nurses who may need assistance in attending. – **BY SIERRA MARSHALL '21**

Paying It Forward

For over 25 years, the Community of Christ-affiliated **HEALTH MINISTRIES ASSOCIATION** has been closely aligned with Graceland University and the School of Nursing. Last year, the association decided to dissolve and yet still managed to leave a legacy for Graceland nurses into the future.

Health Ministries Association (HMA) incorporated Community of Christ's values, beliefs, and practices as components in motivating persons toward health and wholeness. Their mission was to encourage and empower leaders in the integration of faith and health in their local communities. When the organization's leaders decided to retire, they wanted to make an impact on the future by donating their funds to a worthy cause. They approved the Graceland University Resolution on October 12, 2023, to reallocate the remaining HMA funds – providing an endowment of \$100,000 for undergraduate nursing scholarships at Graceland University.

The Health Ministries Association was funded by membership dues and donations during its existence and upon the decision to dissolve, they were faced with allocating the remaining funds.

The organization partnered with Graceland to use their \$100,000 gift by establishing the **Community of Christ Health Ministries Association Joan Scribner Pratt Memorial Endowed Nursing Scholarship Fund** to aid undergraduate nursing students who meet the scholarship guidelines. The fund remains open and can receive additional donations at any time. This enables other generous Graceland graduates and friends to contribute to this endowed scholarship and help future nurses earn their degrees.

Do you want to give to this scholarship or another endowment? Graceland has nearly 300 endowments that support the university in four areas – faculty, institutional, program, and scholarships – which means that by preparing for our future, we are helping Graceland students to better theirs.

Q Find out more: graceland.edu/give

Good News Gifts

BY ANGELA SLOSARSKI

Supporting Graceland is about much more than just giving – it's about honoring the memories made on “the Hill,” giving back to a place that fosters both academic and personal growth, and **LEAVING A LEGACY** that outlasts the present. [BY JIMMY MICHAEL, CG](#)

These alumni and their stories, along with many others, are examples of how deep roots strengthen our community, enabling Graceland to grow and prosper. It is these roots that allow Graceland to grow, inspire new generations, and continue its mission of providing a transformative education in an environment that prepares students to live meaningful and productive lives. Their lasting contributions ensure that future students can build their own legacies, just as they have, in a community that cherishes its past and looks forward to its future.



Tee & Debbie Ness

Tee '75 and Deborah “Debbie” Hawthorne '75 Ness, high school sweethearts whose relationship deepened at Graceland, continue to cherish the community that played a pivotal role in their early lives together.

Their recent generous donation aims to address Graceland's greatest needs – from student support initiatives to substantial scholarships. Debbie fondly shares, “Graceland was where Tee and I embraced all the fun and fellowship of our houses, Cheville and Sariah. It's where we enjoyed endless food and ice-cold milk at the Commons, and Indian Fry Bread at The Swarm Inn – it's where our lives together truly began. It's thrilling to know we can help others start their stories here.”

Their contribution reflects their profound belief in Graceland's lasting values and the life skills it imparts, which they credit with launching them into life's great adventures. “Graceland continues to foster the kind of values and decision-making skills that shaped us back then. This place is dear to our hearts, and we enthusiastically support its mission,” adds Debbie. The Ness' gifts are a heartfelt tribute to a place that gave them so much, ensuring that current and future students can also experience the best of Graceland.



Greg and Jeanne Mann

Gregory “Greg” '70 and Jeanne Fisher '72 Mann's sense of gratitude toward Graceland University motivated them to establish the Greg and Jeanne Fisher Mann Family Endowed Scholarship. This scholarship allows students to access the transformative education that shaped their own lives, echoing the Manns' experiences at Graceland. Committed to giving back, the Manns aim to extend the exceptional opportunities they received to future generations.

The establishment of this scholarship not only provides financial assistance but also fosters a legacy of opportunity. It reflects Greg and Jeanne's deep appreciation for the University and their desire to support an environment where students thrive. More than just aiding in tuition, the scholarship helps students engage fully in campus life and academic pursuits, making their Graceland Experience richer.

Their commitment reinforces the values of community and educational excellence at Graceland, making a lasting impact on the university and its students. Through their generosity, the Manns ensure that Graceland remains a center for growth and learning, preparing students to make meaningful contributions to society. Their involvement is a testament to the enduring bonds formed by the Graceland community.



Jim & Cathy Lysinger

James “Jim” '86 and Catherine “Cathy” Wolfe '88 Lysinger's connection to Graceland University is exemplary, multifaceted, and extends through several generations. As vital members of the community – Jim on the board of trustees and Cathy as the secretary of the alumni board – their commitment is a powerful testament to their belief in Graceland's mission and its impactful role in shaping students' futures. They contribute significantly, not just with their leadership but also through financial support for capital projects like the Newcom Center, the Morden Center and the Henson Strength and Conditioning Center, enhancing the University's facilities and programs.

Their generous donations help ensure that Graceland continues to be a place where students can excel academically, athletically, and personally. Their belief that the Graceland experience sets the foundation for a successful career fuels their involvement in strategic planning and decision-making, leading toward sustainable growth and educational excellence.

Their efforts help sustain Graceland's legacy of developing leaders and changemakers, making a lasting impact not just on campus but across all communities. The profound engagement of the Lysingers showcases the critical role alumni play in advancing the values and aspirations of Graceland.

CLASS NOTES

SEND US YOUR NEWS

Completed a degree program? Published a written work? Received that awesome promotion? Earned a prestigious honor? If so, we want to hear about it.

Submissions are included as space permits and may be edited for length or clarity. Send high quality digital photos — 300 dpi and/or minimum of 1,200 pixels on the image's shortest side.

Share your memories and milestones with us here: graceland.edu/classnotes

Class notes submitted between Oct. 14, 2023, and April 18, 2024, are included in this issue.

85 Paul Northey, Whitby, Canada, received the Canadian Nuclear Laboratories Distinguished Merit Award on Nov. 30, 2023, as part of a regulatory licensing team working with the Port Hope Area Initiative.

96 Jerry Dale Jr., Casper, Wyoming, was promoted Feb. 13, 2024, to lead the effort to rebuild relationships in the LGBTQ+ Community for the American Red Cross. Jerry is a co-founder of the Red Cross Pride Resource Group. 📧 **1**

99 LTC Gregory Howard Jr., El Paso, Texas, has been selected for promotion to Colonel (O-6). He has had a decorated career

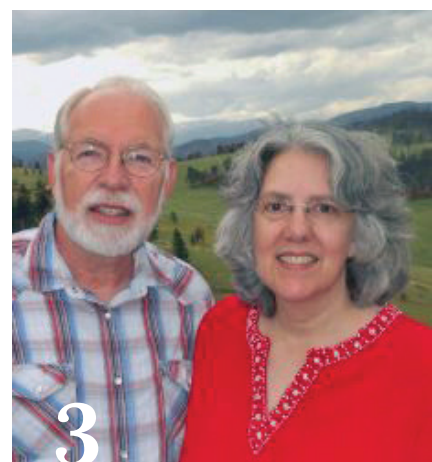
since enlisting in the United States Army in 1988 and graduating from Army Officer Candidate School in 2000. He is scheduled to attend the Army War College in summer 2024. Howard and his wife, Annette, have two daughters, Taylor (19) and Aaliyah (17). 📧 **2**

20 Travis Miyashiro, Mililani, Hawaii, completed the Field Artillery Basic Officer Leaders Course at Fort Sill, Oklahoma. He has been assigned to the 210th Field Artillery Brigade, 1-38th Field Artillery Regiment stationed in South Korea.

BIRTHS

09 Brett and Carolyn Waite, Shawnee, Kansas, daughter Carmella Waite, April 8, 2023.

14 Andrew and Kylie Perkins Adams, Kansas City, Missouri, daughter Berkely Adams, Aug. 31, 2023.



ANNIVERSARIES

48 Ronald and Shirley Pratt Young, Saint Paul, Minnesota, 75 years, July 29, 2023.

49 William and Doris McElroy, Lamoni, Iowa, 74 years, Nov. 12, 2023. **Leonard and Eilene O'Dell '59 Speer**, Glendale, Arizona, 63 years, Dec. 24, 2023.

52 Art and Dottie Fisher '53 Burnham, Wheat Ridge, Colorado, 70 years, Nov. 22, 2023.

63 Lee and Nancy Chesworth Peters, Bradenton, Florida, 63 years, Dec. 30, 2023.

76 David and Carol Olson Birks, Fort Collins, Colorado, 50 years, Jan. 5, 2024. 📧 **3**

83 Bernard "Bernie" and Mary Jean Newcomer, Beaumont, California, 35 years, Oct. 7, 2023.

DEATHS

Correction: The following alumni were added in error to the Deaths section in the Fall 2023 issue – Cyd Slayton, Marta Poore, Patricia Bacon, and Nancy Boyd Shaw. We extend our sincere apologies.

43 Louise MacDonald Morden, Niagara Falls, New York, March 17, 2024.

45 Betty Clason Brainerd, Bradenton, Florida, Jan. 7, 2023. **Laura Wheeler Nelson,** Temple, Texas, Feb. 21, 2011.

47 Barbara Trowbridge Newcom, Blue Springs, Missouri, Dec. 10, 2023.

48 Joan Gray Green, Lamoni, Iowa, Dec. 28, 2023. **Marion Davis Kleinau,** Carbondale, Illinois, March 7, 2024.

49 Barbara Hands Bernauer, Kansas City, Missouri, Aug. 28, 2023. **William Knox,** Mount Pleasant, Iowa, Dec. 5, 2023. **Cleora Williams Sargeant,** Bow, Washington, Oct. 14, 2023.

50 William Marsh, Independence, Missouri, Jan. 19, 2024. **Donald Potts,** Independence, Missouri, Jan. 3, 2024.

51 Jacqueline Roberts Martin, Mobile, Alabama, Jan. 2, 2023.

52 Jacquelyn Kelsey Chapman, Bradenton, Florida, Dec. 30, 2023. **Bruce Graybill,** Lamoni, Iowa, Dec. 22, 2023. **Richard Hahn,** Sandia Park, New Mexico, June 20, 2021. **Lois Moser White,** Blue Springs, Missouri, Dec. 18, 2021.

53 Carl Levitt, Kalispell, Montana, June 4, 2023. **Bruce Logeman,** Independence, Missouri, Jan. 8, 2024.

54 Franklin Hester, Grand Blanc, Michigan, Nov. 27, 2023. **Katherine Frisby Owens,** Detroit, Michigan, Oct. 3, 2023. **Barbara Fears Tabor,** Lee's Summit, Missouri, Jan. 13, 2024. **Evelyn McKee Wands,** Denver, Colorado, July 6, 2019.

55 Barbara Plumb Burrow, Independence, Missouri, Oct. 14, 2022. **Paul Cline,** Duluth, Minnesota, May 11, 2022. **Angela Roberts Crowell,** Independence, Missouri, March 22, 2019. **Hazlet Gann Edmonds,** Albuquerque, New Mexico, Jan. 7, 2007. **Jack**

Fehrenbacher, Tulsa, Oklahoma, Jan. 10, 2021. **Charlene Snyder Fleming,** Mobile, Alabama, Dec. 13, 2009. **Frank Friend,** Creighton, Missouri, Dec. 4, 2018. **David Kent,** Mount Prospect, Illinois, July 25, 2020. **Carol Richard Lowrie,** Port Orchard, Washington, Nov. 24, 2021. **LouAnn Spence McCartney,** Omaha, Nebraska, Feb. 28, 2024. **Mary Lou Weaver Noble,** Port Charlotte, Florida, Feb. 26, 2024. **Marvin Sevy,** Kansas City, Missouri, April 19, 2011. **Shirley Arnold Smith,** Kalamazoo, Michigan, Feb. 2, 2024. **John Stageman,** Pickford, Michigan, July 9, 2022. **Marilyn Eldt Williams,** Portland, Oregon, Jan. 8, 2022.

56 Roger Acord, Caledonia, Wisconsin, July 5, 2019. **Jack Ballinger,** Canton, Georgia, Feb. 2, 2023. **Clayton Barber Jr.,** Grand Rapids, Michigan, July 9, 2023. **Walter Didriksen,** Frisco, Texas, May 30, 2019.

Jane Cook Fehrenbacher, Tulsa, Oklahoma, Nov. 7, 2023. **Edward Fuller,** McMinnville, Oregon, March 14, 2023. **Elaine Bartlett Gregg,** Bradenton, Florida, Aug. 15, 2021. **John Harkrader,** Adel, Iowa, Oct. 9, 2019. **Patsy Odum Helton,** Cantonment, Florida, Oct. 24, 2018. **Chester Johnson,** Sergeant Bluff, Iowa, May 21, 2013. **Wanda Andersen Kauffman,** Ida Grove, Iowa, Aug. 29, 2022.

Ellen Henretty McGuire, Redcrest, California, May 4, 2014. **Marshall McGuire,** Redcrest, California, Sept. 9, 2023. **Clois Carmack McRaven,** Springfield, Missouri, March 1, 2020. **Lawrence Propst,** Council Bluff, Iowa, Oct. 17, 2012. **Jeanette Smith Reyburn,** Sun City, California, Dec. 26, 2020.

Shirley Lay Sanders, Hot Springs, Arkansas, July 30, 2022. **Carl Shakespeare,** Independence, Missouri, Oct. 6, 2019. **Gary Shears,** Florence, New Jersey, Dec. 11, 2012. **Karen Wickstrom,** Moxee, Washington, April 13, 2019. **John Wiley,** Overland Park, Kansas, Feb. 14, 2024.

57 Vernon Cline, Fort Smith, Arkansas, Nov. 25, 2009. **Jack DeSelms,** Independence, Missouri, Dec. 3, 2022. **Marjorie Dixon Dunlap,** Milton, Florida, Jan. 22, 2019. **David Gaw,** West Chester, Ohio, Sept. 30, 2015. **Nancy Thompson Harlacher,** Independence, Missouri, March 29, 2019. **Frances Hara McNellis,** Lenexa, Kansas,

IN REMEMBRANCE

Distinguished Professor Emeritus Bruce Graybill '52 passed away peacefully in Lamoni, Iowa, December 22, 2023.

Born in 1931 to Amos and Viola Graybill, he grew up in Council Bluffs, Iowa with his brother Wilmer. He received undergraduate degrees from Graceland and Iowa State University, and his doctorate in Chemistry from Florida State University.

In 1961, Graybill moved his family to Lamoni to accept a position at Graceland as a professor of chemistry, where he taught for 33 years. His passion at Graceland was teaching and inspiring his students to learn. During his early years as a faculty member, he worked with Bob Ramsey '57 to develop a baccalaureate degree in chemistry. Faculty peers respected him as a dedicated professor, chair of the Science and Mathematics division for 22 years, and acting Dean of Faculty from 1974-75 and 1977-78. He was named Distinguished Professor in 1975, received the Excellence in Teaching award in 1980, and retired as a Distinguished Professor Emeritus in 1994. His universal respect resulted in Gunsolley Annex being renamed Graybill Hall in his honor.

Graceland Board of Trustees Chair Mike Wiley, PhD, '83, studied under Graybill and expressed his condolences: "Bruce Graybill was one of the most impactful professors on my academic development, for which I am profoundly grateful. Although the subjects he taught were among the most challenging, his exceptional communication style, combining clarity, encouragement, and gentle patience, facilitated learning and the development of critical thinking skills for generations of Graceland students. The large number of scientists, educators and health care professionals positively influenced by Dr. Graybill represents his great legacy to the University and the community, and we've been richly blessed through his life's work of outstanding teaching, mentoring, and leadership."

Graybill served the Lamoni community even after his retirement from Graceland through the Lions Club, the Lamoni Community School Board, the building of the Lamoni bike trail, and the Community of Christ church.

Former Graceland President Patricia H. Draves said, "I spent many football games and concerts sitting with Dr. Graybill. As a fellow chemist, we always had much to discuss. The impact of his contributions to Graceland over the years as a faculty member and active member of the community will be felt for generations. We remember and honor his legacy here on 'the Hill.'"

Donations in honor of Dr. Graybill can be made to Graceland University and will go toward the Graybill Residence Hall Fund at the family's request, ensuring even more students have access to the Graceland Experience.





IN REMEMBRANCE

Team Hampton

Few coaches impacted more lives over the years at Graceland than **DR. GERALD E. "JERRY" HAMPTON '52.**

As a student, he was honored for his excellence in football, track, basketball, and tennis. After obtaining his doctorate from Columbia University Teachers College, he returned to Graceland as a member of the physical education faculty in 1960. He eventually became the chair of the Division of Health and Education and took over as the head wrestling coach.

Hampton was a member of the faculty for 50 years before retiring as Professor Emeritus in 2010. He impacted countless Graceland students and was known as arguably the most versatile coach in Yellowjacket history. He coached wrestling for 22 seasons, amassing a 238-87 record, and never lost a conference championship. He earned Conference Coach of the Year honors in wrestling and served as the president of the NAIA National Wrestling Coaches Association.

Athletic Director Brady McKillip '00 coached alongside Hampton for nearly a decade before his retirement. He was asked about Hampton's impact and replied, "What do you say about Jerry? He

was a Graceland legend and will be greatly missed. The number of lives he touched over the years is hard to imagine. Everyone that was lucky enough to be around him in any capacity is no doubt a better person because of it."

Outside of wrestling, Hampton also spent time at Graceland coaching football (25 years), golf, cross country, and tennis for 34 years, a sport which earned him Conference Coach of the Year honors 20 times, as well as earning his teams multiple trips to the NAIA National Championship. His tennis teams won 20 Heart of America titles.

When he retired in 2010, Hampton reflected on his coaching career, saying, "I've truly looked forward to coming to Graceland every day and have never considered it work. What I will miss the most is the close associations that coaches create with student-athletes both while they're playing and once they head out into the real world. Spending over half my life at a place I love is something I'll cherish forever. I've always said if I had to live my life over again, I wouldn't change a thing."

"What do you say about Jerry? He was a Graceland legend and will be greatly missed. The number of lives he touched over the years is hard to imagine. Everyone that was lucky enough to be around him in any capacity is no doubt a better person because of it."

BRADY MCKILLIP '00
Athletic Director

Hampton was inducted into the Graceland Athletic Hall of Fame in 1986 and the athletic administration building on the Lamoni campus bears his name.

Hampton impacted the greater Lamoni community as well. He and his wife, Helen Russell '52 Hampton, who also served on Graceland's faculty, opened two businesses in Lamoni that were mainstays – the Pizza Shack and Country Plus. Even in retirement, he volunteered regularly with EveryStep Hospice in Osceola and Mount Ayr, and in 2015 received the Lifetime Presidential Volunteer Service Award for more than 10,000 hours of service to his community. EveryStep honored him in 2019 with a special Quilts of Valor quilt, awarded to military members and veterans who have been touched by war. Hampton served in the army prior to joining the Graceland faculty.

He loved to sing as well and was part of the employee quartet, "The Unpredictables," who entertained students, faculty, staff, and alumni over the years.

The Hampton family Jerry and Helen created – their children, grandchildren, and great-grandchildren – are affectionately known throughout the Graceland community as *Team Hampton*. Many of them have served on Graceland's board of trustees, alumni board, and as members of the staff.

Chief Marketing Officer Shane Adams '99, lived around the corner from the Hamptons as a child. He shared, "Graceland University is forever changed because of the *Team Hampton* impact. Jerry is one of the pillars of Graceland's foundation – a rock of Graceland's athletic department and a shining example of the true nature of Graceland graduates everywhere. His memory lives on in the lives of all he taught, coached, and befriended over the years. Thank you, *Team Hampton*, for sharing him with us." – **BY SHANE ADAMS '99**

Nov. 3, 2020. **Gloria Jezewski Minkler**, Wellington, Ohio, Dec. 22, 2023. **Barbara Bert Pamer**, Raymore, Missouri, May 1, 2019. **Larry Pool**, Zephyrhills, Florida, Jan. 31, 2024. **George Radmall**, Shawnee Mission, Kansas, Oct. 19, 2018. **Alice Chapman Ruble**, Independence, Missouri, Feb. 21, 2023. **Gerald Sooter**, Columbia, Missouri, April 21, 2015. **Wanatta Chambers Wolf**, Holland, Michigan, March 11, 2006.

58 Amos Bradley, Westminster, Colorado, Jan. 29, 2015. **Merilou Gilmore Hartwig**, Kansas City, Missouri, Dec. 9, 2023. **Marilyn Corley Tolliver**, Oak Grove, Missouri, Jan. 30, 2020.

59 Ralph Bellinger, Syracuse, New York, May 27, 2022. **Patricia Roberts Bjorland**, Blue Springs, Missouri, June, 10, 2023. **Cameron Doherty**, Scotts Valley, California, Feb. 24, 2014. **Patricia Treiber McDonald**, The Villages, Florida, March 3, 2024. **Mary Bavington Mitchell**, North Bay, Ontario, Canada, Nov. 7, 2023. **Nila Johnson Peel**, Sandy, Oregon, Sept. 19, 2015.

62 Sharon Dobson Hamilton, Spokane, Washington, Oct. 6, 2023. **Margo Montgomery Elvin**, Prior Lake, Minnesota, Nov. 25, 2023. **Carol Bunting Landon**, Ellicott City, Maryland, Jan. 8, 2024. **James Rae**, Rochester, Minnesota, Dec. 25, 2023.

63 Louise Llewellyn Bagley, Kansas City, Missouri, April 27, 2022.

64 Karen Walters Cook, Kalamazoo, Michigan, Feb. 21, 2021. **Betty Doty Isenhauer**, Atlanta, Michigan, March 27, 2015. **Steven Minter**, Hagerstown, Maryland, Dec. 25, 2009.

65 Barbee White Heiny, Chattanooga, Tennessee, March 5, 2023.

67 Thomas "Tim" Jones, Thurman, Iowa, Oct. 26, 2023. **Donald Wallis**, Loveland, Colorado, Jan. 13, 2023.

68 Sharon Smith Outhouse, Bella Vista, Arkansas, Oct. 24, 2023.

69 Ann Lyman Amsberry, Stone Lake, Wisconsin, Nov. 22, 2023. **Joan Wight Munter**, Salem, Illinois, Dec. 28, 2023.

IN REMEMBRANCE

The "Singing Philosopher Cowboy" Dennis Steele, PhD, who served as a professor at Graceland from 1965 until 1984, passed away November 11, 2023, at the age of 83.

During his time at Graceland, Steele was known as an innovator amongst the faculty – not surprising considering his educational background, which included a bachelor's degree in mathematics, a master's degree in philosophy, and a doctorate in computer science.

Steele was a man of many talents. When he joined the Graceland faculty to teach math and philosophy in 1965, he wasted no time making an impact in another one of his great areas of passion: music. Steele helped a group of students organize the New Folk Singers, later known as the North Door Singers, a musical ensemble that toured the United States until 1973. In the 1970s, Steele displayed his own musical talents as part of the faculty quartet, The



Unpredictables. In 1978, he created a student musical group called the Graceland Ramblers (originally called the Riverboat Ramblers) that originated as a winter term course. The group was so popular that Graceland funded the annual summer tours of the Ramblers across North America as part of the college's public relations and recruiting efforts. Steele also helped organize the Saddle Club, a horseback riding group that continued for many years after its organization in 1975–76.

Steele left Graceland in 1984 when he was called back to the West, joining the faculty at the University of Wyoming before finishing his career at Regis University in Denver, Colo. Dennis' four children – Heather, Chad, Shannan, and Gabe – all shared the stage with him at one time. He is survived by his children, his life partner Molly Myer, his five grandchildren, and the many students that he impacted at Graceland, the University of Wyoming, and Regis, both as a professor as well as a music arranger and producer.

70 Cheryl Akas Sjolin, Atlantic, Iowa, Dec. 9, 2023.

71 Robert Revell, Omaha, Nebraska, Dec. 13, 2023. **Rheta Sponsler**, Humeston, Iowa, Dec. 28, 2023.

72 John Koehler, Kansas City, Missouri, July 30, 2023.

73 Michael Corrie, Carrollton, Missouri, Oct. 27, 2023.

74 Daniel Barnes, Gardena, California, Nov. 11, 2023. **Geraldine Grant Harraden**, Annapolis, Maryland, Feb. 19, 2017. **David Morgan**, Lamoni, Iowa, Nov. 28, 2023.

76 James Hitt, Woodburn, Iowa, Dec. 7, 2023.

78 Alpha "Alphie" Fulton, Leon, Iowa, April 9, 2024. **Samra Clark Magruder**, Independence, Missouri, March 5, 2023.

79 Karen Hakes-Brown, Colonial Beach, Virginia, Jan. 16, 2024.

80 Harriette Keck Webster, Preston, Missouri, March 30, 2024.

81 Elizabeth "Betty" Harfield, Independence, Missouri, Dec. 23, 2023.

86 Robert Fredenberg, Independence, Missouri, Feb. 21, 2024. **Kyla Boyt Hafeli**, Marion, Illinois, April 4, 2024.

89 Elizabeth Kubec Kemmerer, Lamoni, Iowa, March 21, 2014.

93 Cindi Carrell, Benton City, Washington, Oct. 16, 2023.

94 Judy Gray Crossnoe, Independence, Missouri, Nov. 2, 2023. **Lillian Mlynarski**, Champaign, Illinois, Feb. 12, 2018.

95 Elizabeth Wheeler Kayadu, Houston, Texas, Sept. 24, 2023.

97 George Kilpatrick, Lee's Summit, Missouri, June 10, 2021.

99 Patricia Culp Plumb, Woodward, Iowa, Aug. 29, 2023.

00 Rukhmin Singh, Saint Paul, Minnesota, Dec. 25, 2023.

01 Diane Robertson Carrillo, Del Rio, Texas, Feb. 22, 2024.

03 Donna Gauthier Hertz, Auburn, Washington, Nov. 28, 2017.

07 Janet Muehlenthaler Marcum, Grinnell, Iowa, March 20, 2024. ■

ELECTRONIC SERVICE REQUESTED

TIME SENSITIVE MATERIAL

🔍 View the online version of *Horizons* at: graceland.edu/Horizons

Save the Date

October 4-6

**Strongly
Rooted
& Still
Growing**

HOMECOMING 2024

HONOR CLASSES

2014

2004

1994

1984

1974

1964

graceland.edu/homecoming