

Residential Housing

Rooms and Furnishings



Graceland
UNIVERSITY | 1895

Table of Contents

Gunsolley & Graybill	3
Graybill/Gunsolley - Two-Person Room	4
Graybill/Gunsolley – Semi-Private Room	5
Graybill/Gunsolley – Private/Unit Room	6
Tess Morgan	7
Tess Morgan – Two-Person room	8
Tess Morgan – Semi-Private Room	9
Tess Morgan – Private Room/Unit	10
Walker Hall	11
Walker – Two-Person room	12
Walker – Semi-Private Room	13
Walker – Private Room/Unit	14
Small & Thomas Apartments	15
Small & Thomas Apartments – Full Apartment	16
Additional Information	17
Loft Kits & Bunking – A space-saving addition!	18
Housing Accommodations – Meeting your housing needs	19

From room to room within every residence hall on the Lamoni campus, furniture arrangements, built-in furnishings, and general interiors vary depending on the building and the type of room (i.e., two-person room, semi-private room, or private room). The layouts and details included are to provide you with an idea of what your room may be like upon your arrival, and how it should be re-arranged for final check-outs at the end of every school year.

***NOTE:** Graceland University requires that all full-time Lamoni campus students must live in on-campus housing for the duration of their time at Graceland, with some exceptions. Off-campus exemptions include: living at home with a legal parent/guardian within a 25-mile radius of the Lamoni campus (Local Vicinity Exception), being 23+ years old, being married, being a military veteran, or having legal dependent(s) that live with you. Depending on each year's student population size, Graceland grants a limited number of off-campus approvals to seniors (or students with rare and exceptional situations) who submit an off-campus request. Contact our office for more information.

Residence Life

Graceland University, 1 University Place, Lamoni, IA 50140

641.784.5107 office

residencelife@graceland.edu

Gunsolley & Graybill

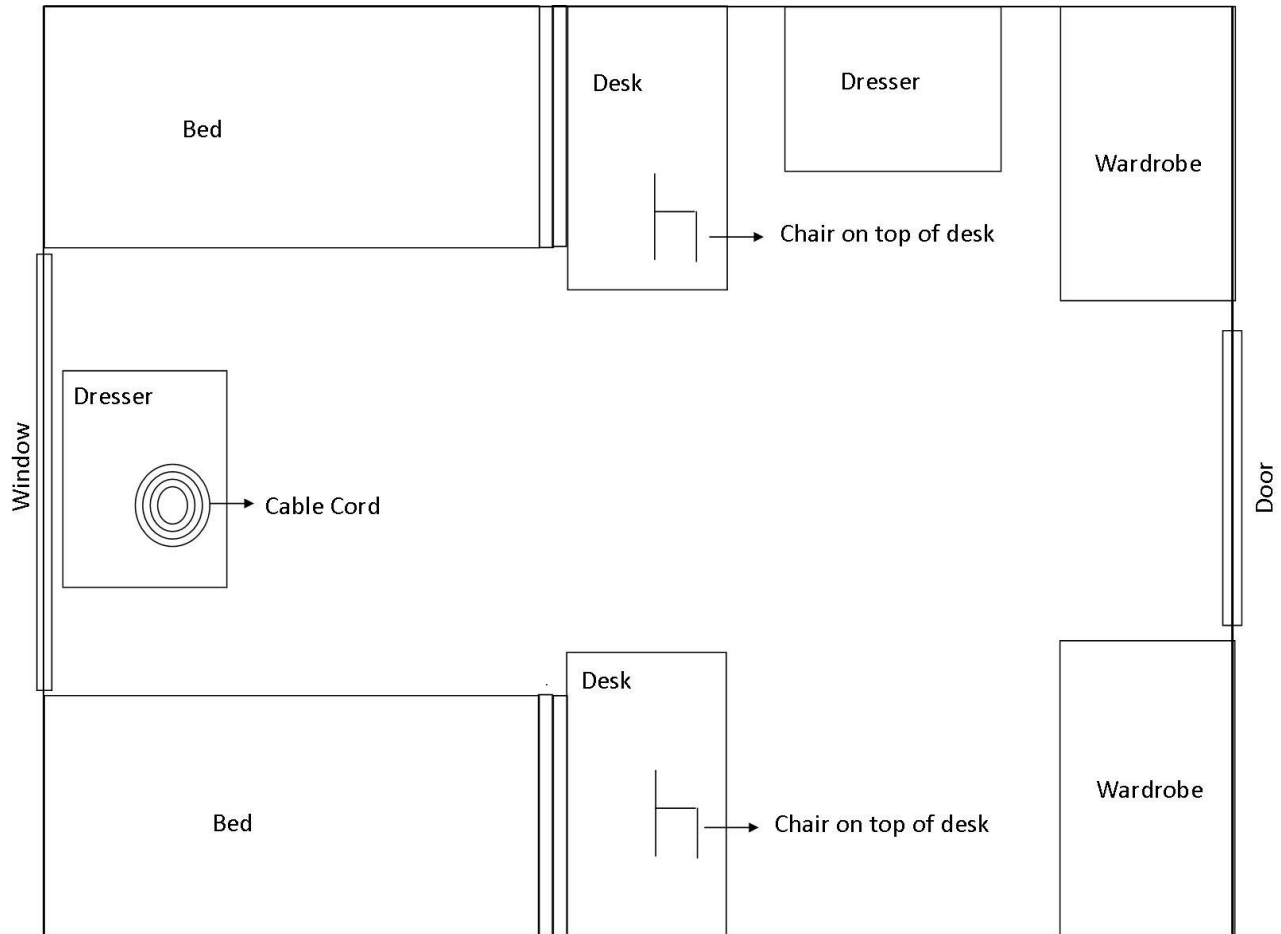
~ Built in 1951 and 1965 respectively ~



Closson • Orion • Powell • Upperclassmen Units
Agape • Cheville • Faunce • Stewart Manor • Tiona

Graybill/Gunsolley - Two-Person Room

Eligible Students: All students

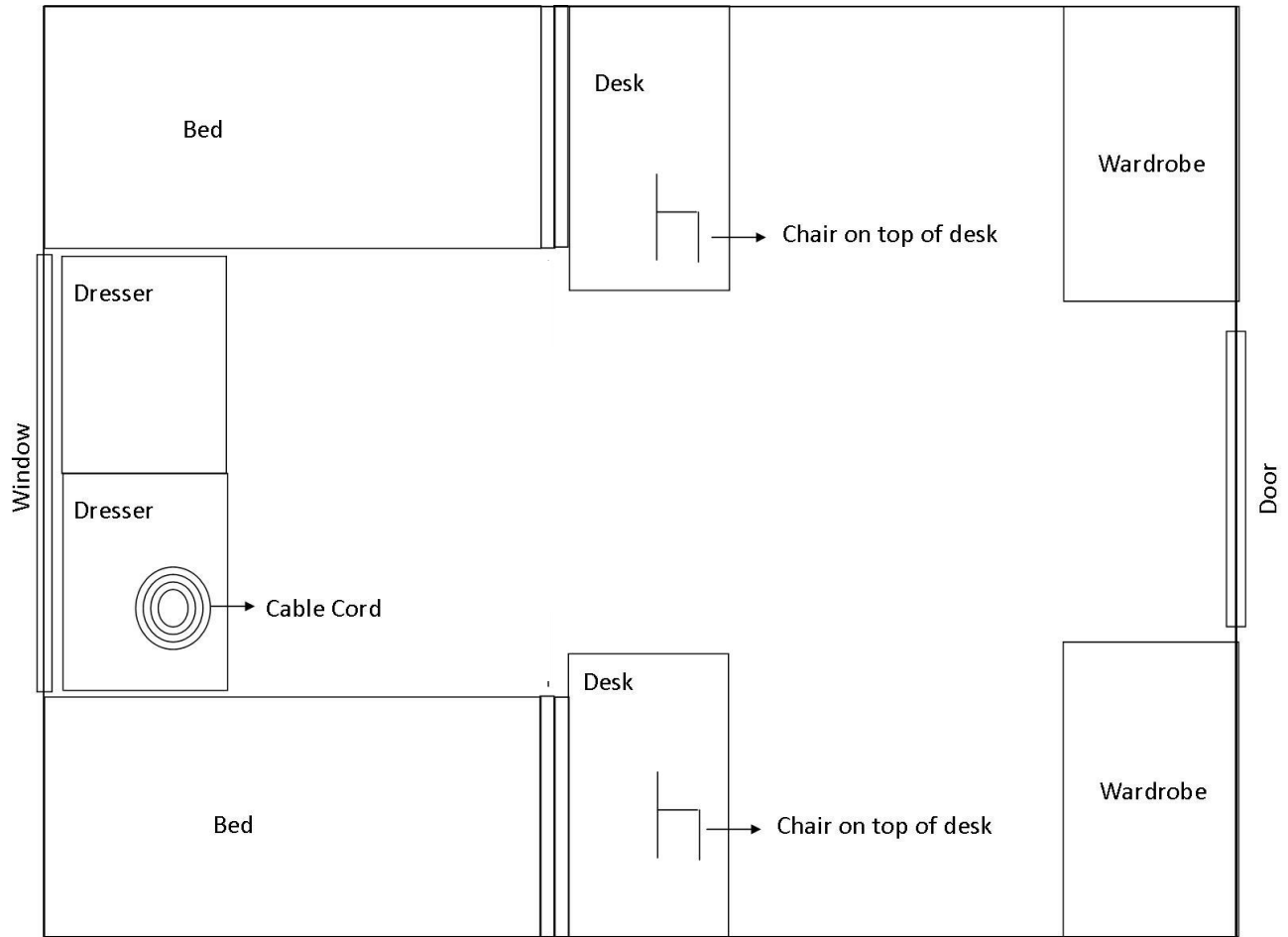


Includes the following furniture and features:

- Twin XL bed (2 –bunking kit provided upon request)
- Desk and chair set (2)
- Dresser (2)
- Wood wardrobe (2)
- Cable cord (upon request)
- Tile floors (carpeted floors on Tiona hall)
- **NO** air conditioning provided
 - All air conditioners must be requested via a [housing accommodation](#) request based on medical need.

Graybill/Gunsolley – Semi-Private Room

Eligible Students: Sophomores, Juniors and Seniors



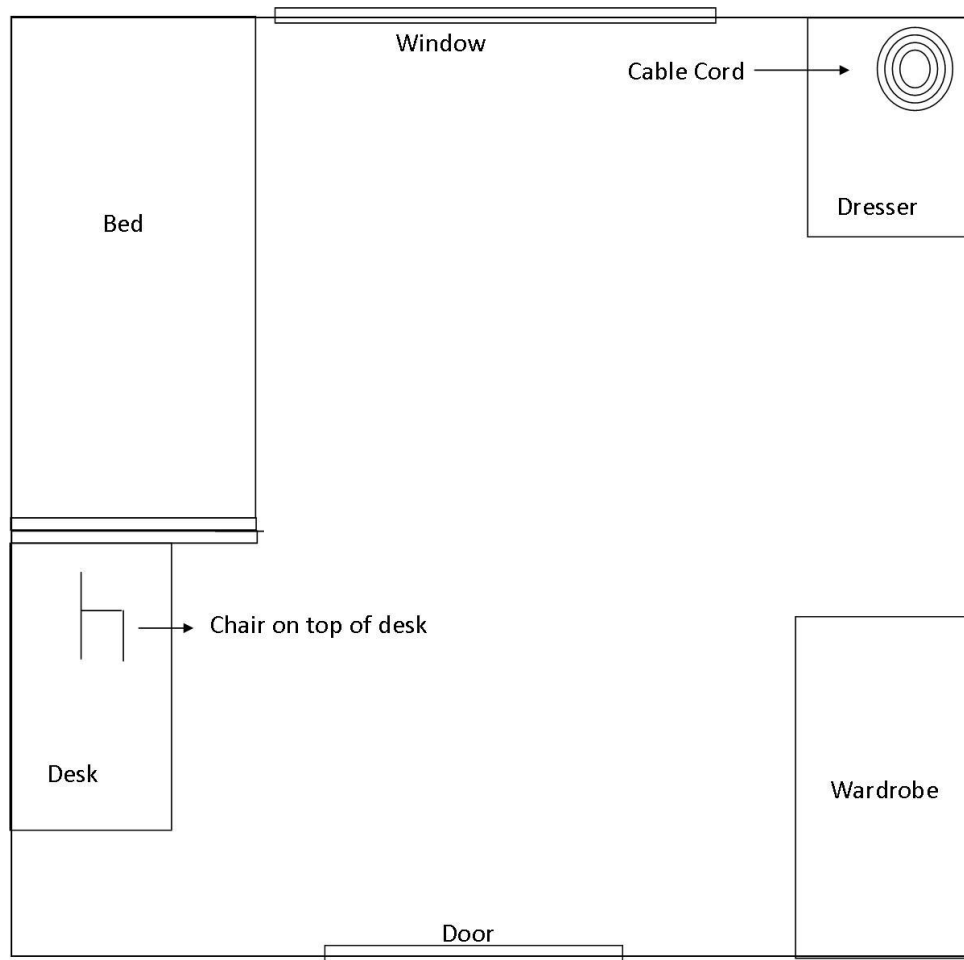
NOTE: Although the layout remains the same between two-person and semi-private rooms, the semi-private rooms have more square footage that provides residents more space.

Includes the following furniture and features:

- Twin XL bed (2 –bunking kit provided upon request)
- Desk and chair set (2)
- Dresser (2)
- Wood wardrobe (2)
- Cable cord (upon request)
- Tile floors (carpeted floors on Tiona hall)
- **NO** air conditioning provided
 - All air conditioners must be requested via a [housing accommodation](#) request based on medical need.

Graybill/Gunsolley – Private/Unit Room

Eligible Students: Juniors (56 s.h.) and Seniors (86 s.h.)



Includes the following furniture and features:

- Twin XL bed (1)
- Desk and chair set (1)
- Dresser (1)
- Wood wardrobe (1)
- Cable cord (upon request)
- Tile floors (carpeted floors on Tiona hall)
- **NO** air conditioning provided in private rooms
 - All private room air conditioners must be requested via a [housing accommodation](#) request based on medical need.
 - Air conditioning is included in the upperclassmen private rooms
 - *Only juniors and seniors are eligible for upperclassmen units, which are located on the main floor of Gunsolley*

Tess Morgan

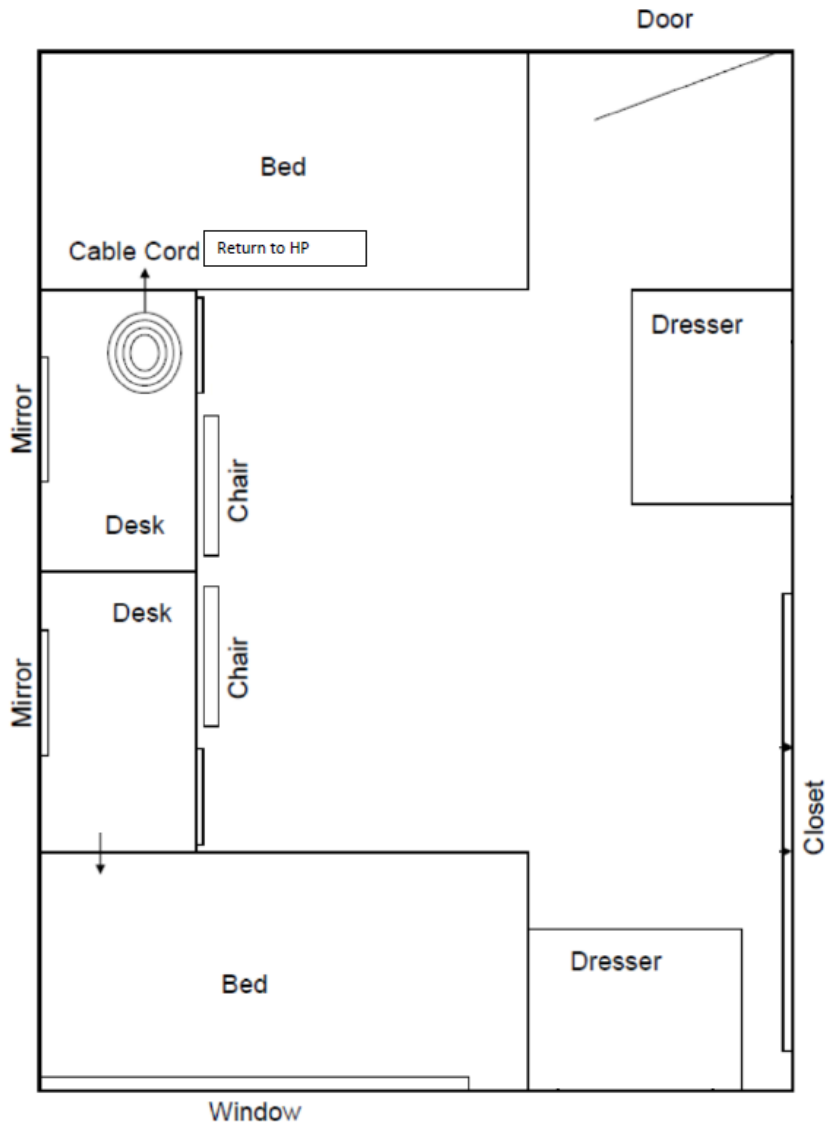
~ Built from 1960-1967 ~



Amici • Hanthorne • Khiyah • Paloma
Sariah • Shalom • Upperclassmen Units

Tess Morgan – Two-Person room

Eligible Students: All students

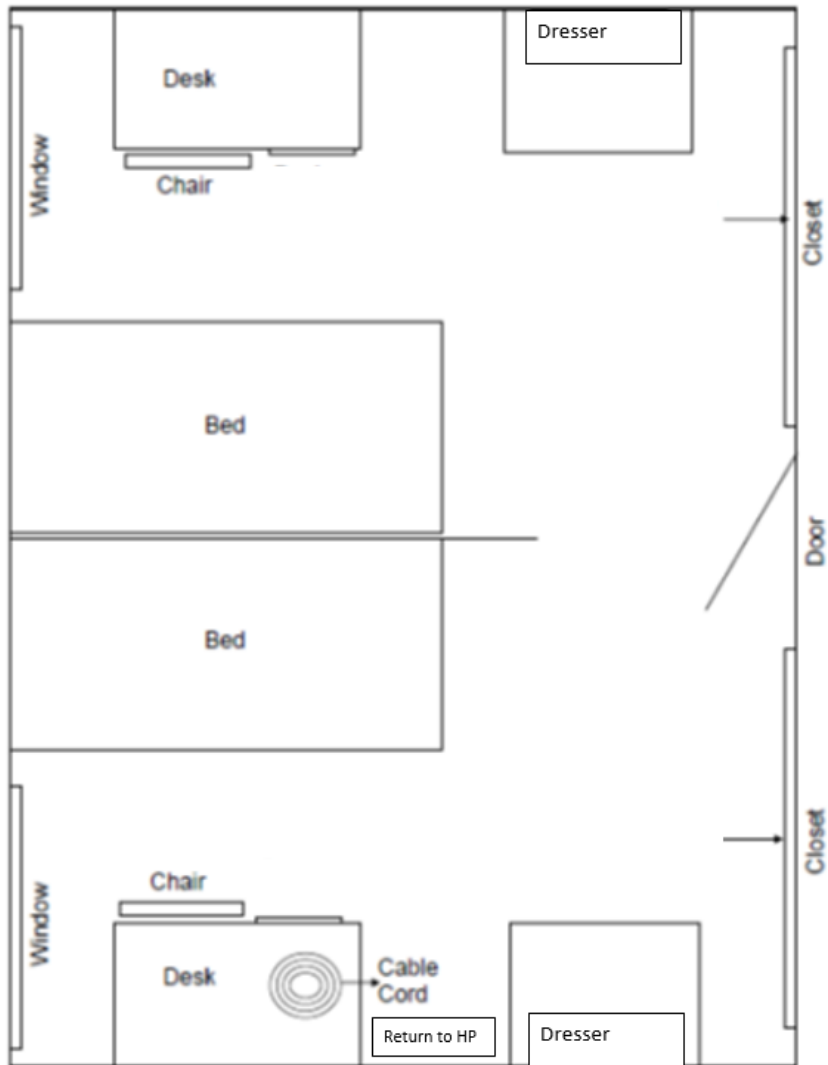


Includes the following furniture and features:

- Twin XL bed (2 –bunking kit provided upon request)
- Desk and chair set (2)
- Dresser (2)
- Built-in wardrobe w/ mirror (1)
- Cable cord (upon request)
- Tile floors (carpeted in basement-level floor rooms)
- **NO** air conditioning provided
 - All air conditioners must be requested via a [housing accommodation](#) request based on medical need.

Tess Morgan – Semi-Private Room

Eligible Students: Sophomores, Juniors and Seniors

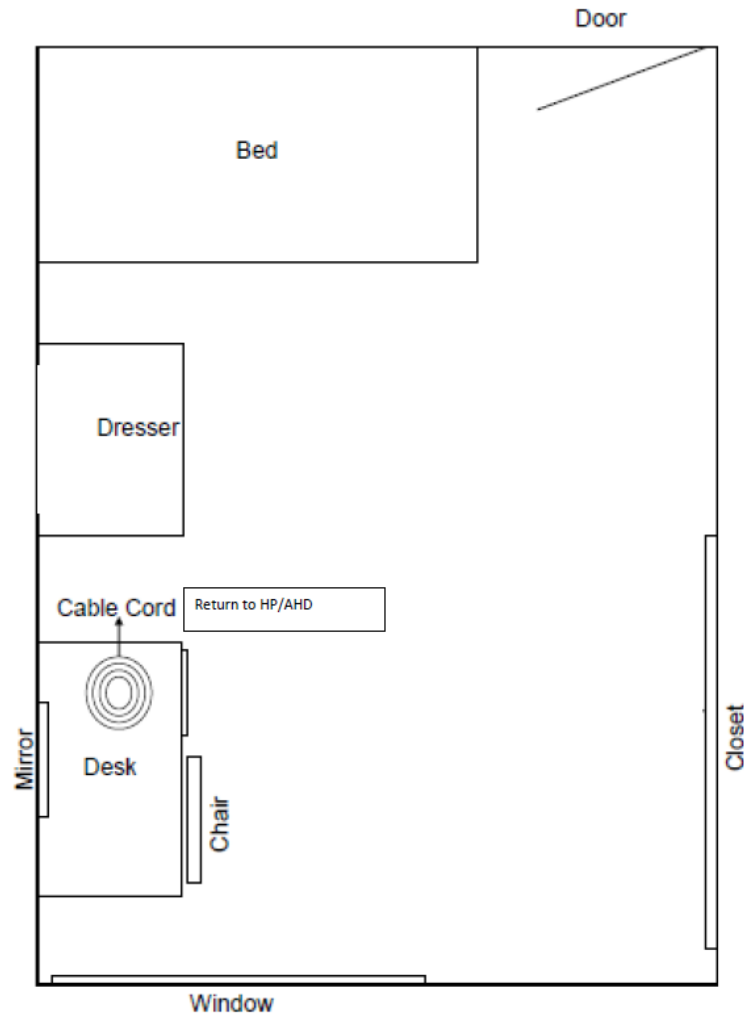


Includes the following furniture and features:

- Twin XL bed (2 –bunking kit provided upon request)
- Desk and chair set (2)
- Dresser (2)
- Built-in wardrobe w/ mirror (2)
- Cable cord (upon request)
- Divider wall
- Tile floors (carpeted in basement-level floor rooms)
- **NO** air conditioning provided
 - All air conditioners must be requested via a [housing accommodation](#) request based on medical need.

Tess Morgan – Private Room/Unit

Eligible Students: Juniors (56 s.h.) and Seniors (86 s.h.)



Includes the following furniture and features:

- Twin XL bed (1)
- Desk and chair set (1)
- Dresser (1)
- Built-in wardrobe w/ mirror (1)
- Cable cord (upon request)
- Tile floors (carpeted in basement-level floor rooms)
- **NO** air conditioning provided in private rooms
 - All private room air conditioners must be requested via a [housing accommodation](#) request based on medical need.
 - Air conditioning is included in the upperclassmen private rooms
 - *Only juniors and seniors are eligible for upperclassmen units which are located in South Tess Morgan.*

Walker Hall

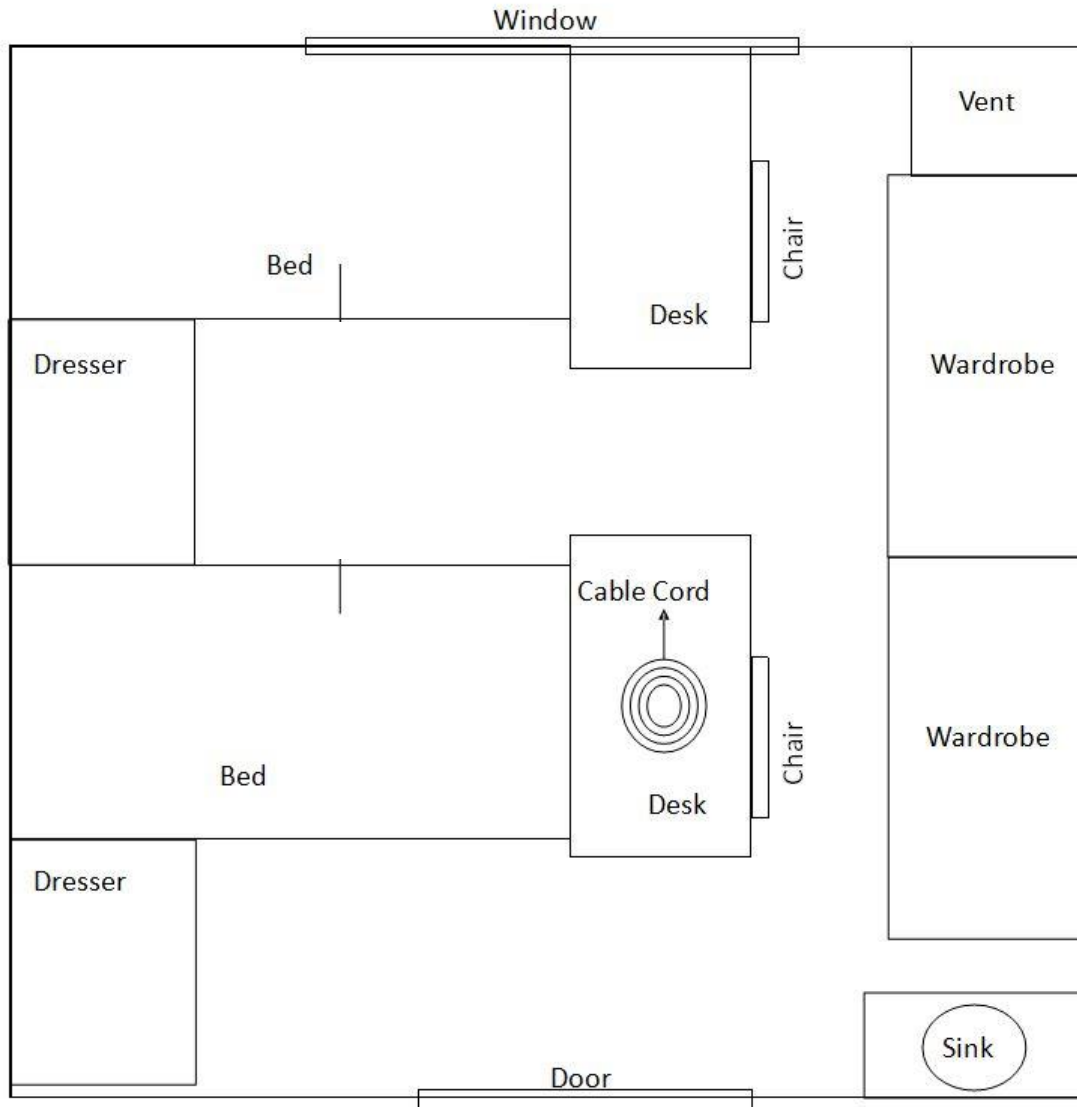
~ Built in 1929 ~



Aponivi • Solah • Upperclassmen Units

Walker – Two-Person room

Eligible Students: All students

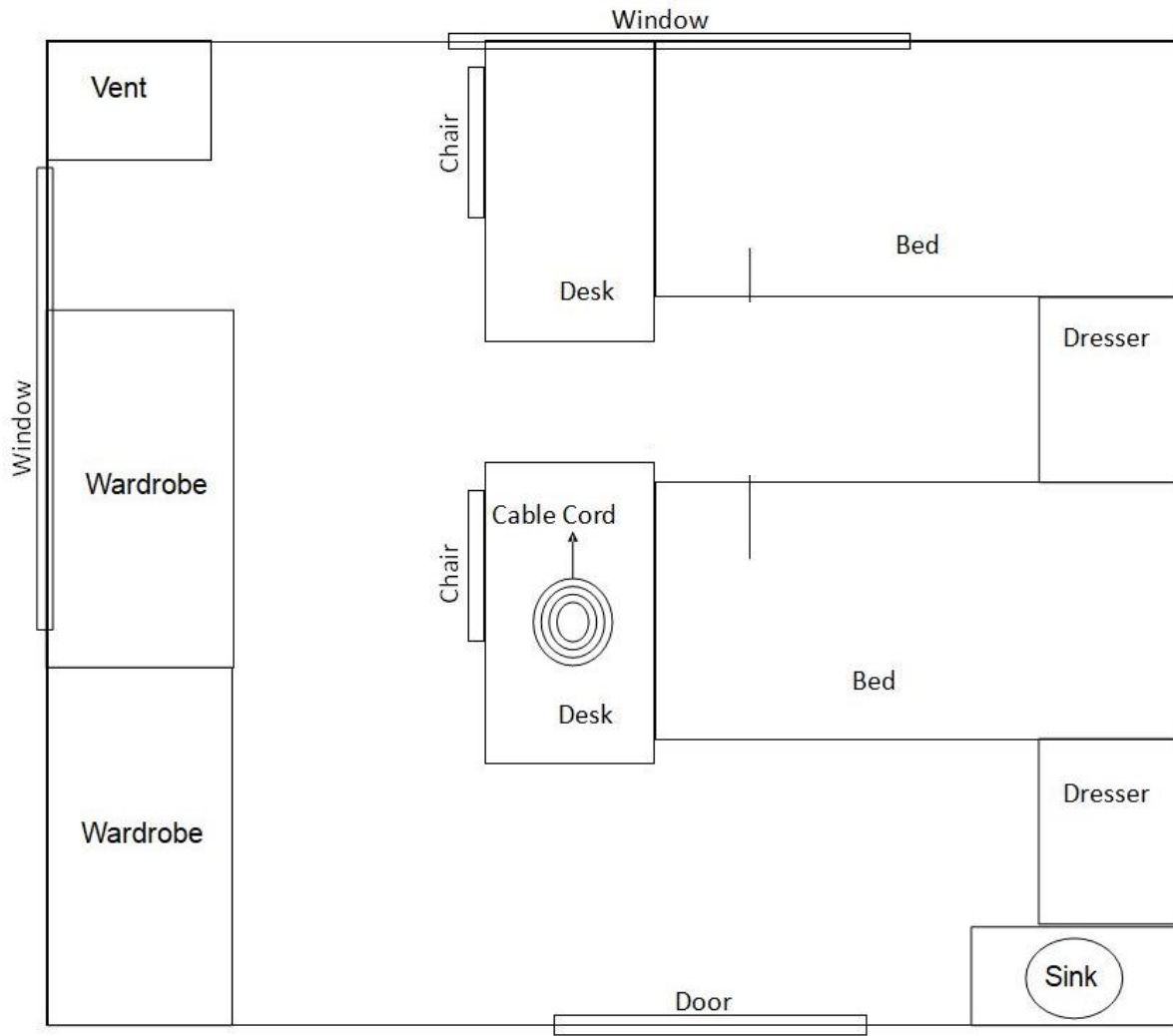


Includes the following furniture and features:

- Twin XL bed (2 –bunking kit provided upon request)
- Desk and chair set (2)
- Dresser (2)
- Wood wardrobe (2)
- Sink (2)
- Cable cord (upon request)
- Carpeted floors
- Air conditioning provided (central air system)

Walker – Semi-Private Room

Eligible Students: Sophomores, Juniors and Seniors



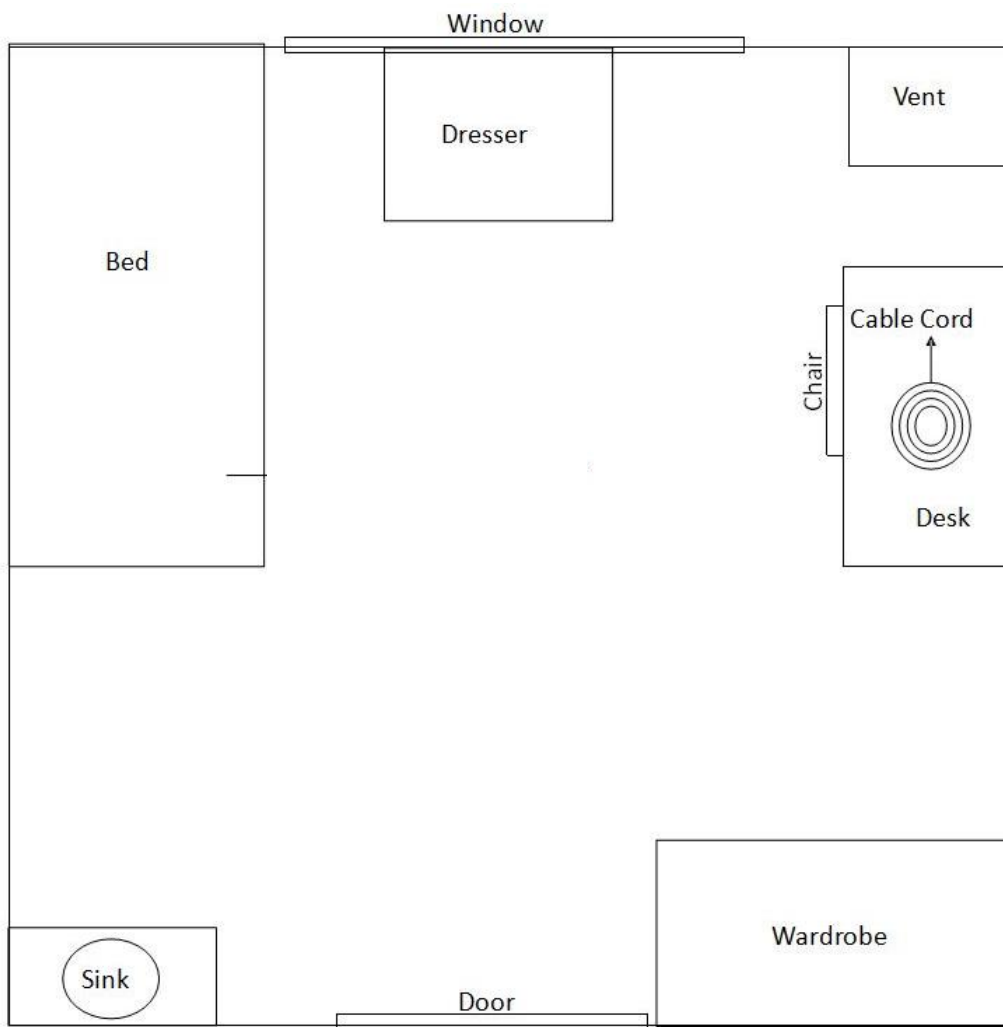
NOTE: Although the layout remains the same between two-person and semi-private rooms, the semi-private rooms have more square footage that provides residents more space.

Includes the following furniture and features:

- Twin XL bed (2 –bunking kit provided upon request)
- Desk and chair set (2)
- Dresser (2)
- Wood wardrobe (2)
- Sink (2)
- Cable cord (upon request)
- Carpeted floors
- Air conditioning provided (central air system)

Walker – Private Room/Unit

Eligible Students: Juniors (56 s.h.) and Seniors (86 s.h.)



Includes the following furniture and features:

- Twin XL bed (1)
- Desk and chair set (1)
- Dresser (1)
- Wood wardrobe (1)
- Sink (1)
- Cable cord (upon request)
- Carpeted floors
- Air conditioning provided (central air system)

Only juniors and seniors are eligible for unit rooms, which are located on the first floor of Walker hall.

Small & Thomas Apartments

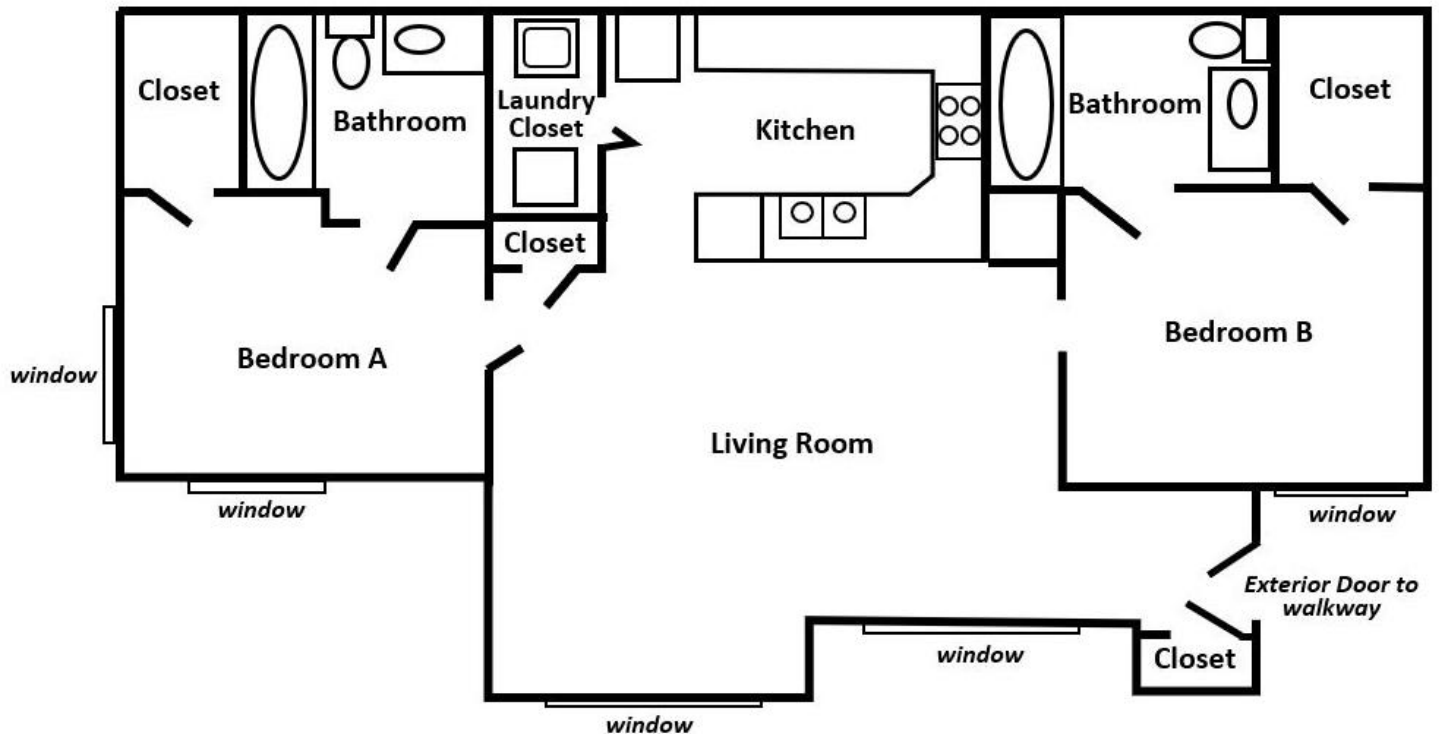
~ Built from 2010-2011 ~



Small & Thomas Apartments – Full Apartment

Eligible Students: Juniors (56 s.h.) and Seniors (86 s.h.) only

(Limited number of openings each year)



Includes the following amenities:

- Bedroom with private bathroom (2)
- Walk-in Closets
- Washer and dryer in each apartment
- Full kitchen with appliances
- Air conditioning
- Cable/Internet-ready
- Private outside entrance

Note: *All apartments come unfurnished. Students must provide their own furniture. Apartment layouts vary depending on location within the apartment building.*

Additional Information

~ Loft Kits and Housing Accommodations ~

Loft Kits & Bunking – A space-saving addition!

Available through CollegeProducts.com



Lofting (using a loft kit) places beds at an added height that creates an alcove for storage, seating, or extra study space underneath it. Those interested in lofting their beds are required to rent and use lofting equipment from our designated provider, CollegeProducts.com. Once you have set up your equipment rental through their website, we will receive your lofting equipment on campus and place it in your room for your arrival. Our staff can then help you set it up on your move-in day!

Interested in lofting your bed? Go to collegeproducts.com/store/gu to get yours rented and ordered today!

NOTE: Homemade lofts are not allowed.

Bunking beds is another space-saving option! All residence hall beds can be bunked one on top of another to offer more floor space in a two-person or semi-private room. You can request a bunking kit from your House President, Asst. Hall Director, or Area Coordinator once you arrive on campus. They or your House Council can assist in setting up your bunk beds.

Housing Accommodations – *Meeting your housing needs* *Provided through Student Disability Services*



Graceland University recognizes that some students come to our campus with unique living needs that are not traditionally met by our residence hall's amenities or the rooms they are placed in when they first arrive. To help create a positive living and learning environment for all, Graceland can provide accommodations based on student's individual needs. Housing accommodations are alternative housing options provided to students with medical, mental health, or other needs affected by living environment. These can include providing approval for an air conditioner to address a medical condition, offering a ground-floor room for easy mobile access, or approval for a private room to provide a safe, private space for those with mental health or medical needs.

Students making requests for housing needs (including medical needs for air-conditioning) must complete an application for accommodations and submit appropriate documentation through the office of Student Disability Services. This form is located at [my.graceland.edu/ICS/Resources/Student Disability Services/](https://my.graceland.edu/ICS/Resources/Student_Disability_Services/) under the "Graceland University Accommodations Request Form". Upon receiving your accommodation request, the Student Disability Services Coordinator will get in touch with you to discuss your housing and academic barriers, experiences, and the best accommodation options to meet your needs.

For questions related to the Lamoni, IA campus' Student Disability Services, please contact sds-info@graceland.edu or 641-784-5083.

The submission deadline will be August 1 for the Fall semester and December 1 for Spring semester. The deadline allows a decision regarding accommodations to be determined prior to the start of an academic term. Applications for accommodations submitted after those deadlines will be accepted and responded to as soon as possible. Housing Accommodations will be sent by Student Disability Services to the Residence Life office for approval from the Director of Residence Life.