

Fall 2014 Vol. 30, No. 2

# Horizons

GRACELAND UNIVERSITY Alumni and Friends Magazine



Welcome Home

# Contents



Deonte Howard (left) and Roy Washington (right) were a part of the warm welcome that Graceland students received on move-in day in August. Athletic teams, admissions, faculty, administration and staff swarmed the parking lots to help students move into their new home for the school year.

2
8
10
16

*Student Spotlights*

*Home Away from Home*

*Homecoming 2014 Schedule*

*Annual Report of Donors*

**Alumni Board of Directors**

- Samuel Smalldon '78  
President
- Cal Closson '82  
Vice President
- Michael Morain '01  
Secretary
- Kevin Brunner '86  
Faculty Representative
- Katie Arnold-Clow '90
- Joe Booz '86
- Jeremy Graybill '98
- Dan Hanton '65
- Jenny Jackson '10
- Kasey Johnson Steen '08
- Rosa La Puente-Flowers '97
- Joseph Postnikoff '83
- Zana Zeqiri Rudi '06
- Stacey Slika '96
- Jeannine Ward '84
- Michael Wiley '83
- David Yost '67

**Administration**

- John Sellars, PhD  
President
- Steven L. Anders, PhD '73  
Dean, C.H. Sandage School of Business  
Interim Dean, College of Liberal Arts and Sciences
- Kathleen M. Clauson Bash, PhD  
Vice President for Institutional Effectiveness
- Kirk D. Bjorland, BA '89  
Vice President for Enrollment Management
- Paul R. Davis, MA '81  
Chief Information and Facilities Officer
- Kelly W. Everett, BA '77  
Vice President for Institutional Advancement
- Tammy E. Everett, PhD '79  
Vice President for Academic Affairs and Dean of Faculty
- Scott Huddleston, EdD  
Interim Dean, Edmund J. Gleazer School of Education
- Claudia D. Horton, PhD, RN '86  
Dean, School of Nursing
- David Schaal, MA '80  
Vice President for Student Life and Dean of Students
- Jodi L. Seymour  
Executive Assistant to the President  
and Assistant Secretary to the Board of Trustees
- Janice K. Tiffany, JD '83  
Vice President for Business and Administrative Services

**Board of Trustees**

- Harry J. Ashenurst, PhD '70, Chair
- W. Gary Howard, PhD '64, Vice-Chair
- Cheryl F. Hansen '77, Secretary
- Cherry M. Hartnett '73, Treasurer
- Robert G. 'Bob' Ackerley  
Susan Bevington '89
- Hon. Leonard L. Boswell '55
- John A. 'Jack' Cave '68
- Denise Dudley, PhD
- Ronald E. 'Ron' Gillilan, MD
- Sharon Graybill '84
- Laurie Heintz '85
- Tom Hiles '82
- Karen Jewell, JD '76
- Susan Johnson '76
- Michael D. Lewis, JD '90
- Kay Johnson Mussell, PhD '63
- Becky Savage '74
- David Seda '83
- Mickey Seeman
- John Sheehy '79
- Dennis Shields JD '77
- Samuel G. 'Sam' Smalldon '78
- Michelle Waite '83
- Robert L. 'Bob' White '77
- Janet Ward Worthington '81
- K. Michael 'Mike' Zabel, MD '84

2	<i>Stephen Moore</i>
3	<i>Mercy Nyambura Mugeche</i>
4	<i>Kurt Van Kuiken</i>
5	<i>Tabitha Gonzalez</i>
6	<i>Christa Hill</i>
7	<i>Montel Evans</i>
8	<i>Athletics at Graceland: A Perspective</i>
12	<i>Performing Arts Series</i>
13	<i>SPECTACULAR 2104 "Beyond"</i>
14	<i>Class Notes</i>
14	<i>Meet Dr. Harry Ashenurst</i>
15	<i>Norman Swails</i>

**Editor**  
Jeanne Davis '81

**Designer**  
Steve Edwards '96

**Photography**  
Michael Gruich

**Communications**  
Aaron Neeley '03  
Tiffany Smith '06  
Brooke Sutherland '03

# “Welcome home.”



What a pleasure it was to say that to three alumni who recently visited the Lamoni campus for the first time in over a decade. What they saw was not the Graceland they remembered, of course.

They were impressed with the landscaping and well-kept lawns. The Helene Center, the Shaw Center expansion, the Fitzgerald Fitness Center and the student apartments took their breath away. Graceland continues to touch their lives. Familiar buildings evoked memories, but what they learned about today's Graceland is what goes on in those classrooms, here in Lamoni and on the Independence campus. In their day, nursing and education had no online programs. Does faculty concern for students disappear when the courses go online? Apparently not. One evaluator ranked Graceland's education program #1 in the nation — that's right; #1 — in both “Student Engagement” and “Faculty Credentials and Training” categories. Graceland was cited as a top-tier “learning university” for its attention to the student academic experience. Graceland was also selected by the American Council for Education (ACE) as one of only 10 schools to participate in an eighteen-month program to bring innovation to higher education. Out of that experience, Graceland administrators are developing an exciting new academic thrust to integrate classroom and student life activities more closely through internships, study abroad and service learning activities that apply scholarship to real-life situations.

The partnership between motivated and caring faculty, staff and administrators, with generous alumni, is what sustains Graceland's commitment to its three core values: learning, wholeness, and community. These values enable student success. It is our passion. This issue of *Horizons* features our students.

We're continuing on a 120-year tradition of equipping and motivating students to invest themselves in the creation of a better world. It took only a few minutes back on campus for the visitors to sense again how profound an impact Graceland had on their lives. They were home, and they were welcome. Welcome home.

John Sellars, PhD, CPA  
President



## Stephen Moore: Biology and Chemistry

**B**efore coming to Graceland, Stephen Moore of Scottsdale, Arizona, didn't see himself as the best student. However, things have changed. Now as a junior, Stephen not only juggles two majors and a minor, but he also plays on the varsity volleyball team and has held a position in the student government.

Stephen attributes a lot of his growth to the opportunities available at Graceland. He remembers his first college course, and making the decision to change his attitude toward school. "I grabbed my chemistry textbook and sat in the library and studied for an hour. I decided I would do that every day; sit in the library and study for an hour. Then, the hour kept getting longer and longer and longer, and I spent more and more time studying."

These days, Stephen thrives on challenges and organic chemistry is his favorite class. He has gained a lot of respect for his professors, Dr. Dan Pratt and Dr. Mary Shawgo, due to the way they teach their challenging courses.

"Time and time again I've wondered if it would have been possible to change as much if I had gone to a larger university. I do know that I had the opportunity to become a much better student at Graceland," said Stephen.

Growing up in the Community of Christ, Stephen was no stranger to Graceland. His parents, Bruce '74 and Jennifer Moore, attended Graceland; however, he wasn't sure it was the place for

him until he went to Spectacular. In his junior year of high school, he was awarded the Wallace B. Smith Scholarship, and that cemented his decision.

After graduation, Stephen plans to further his education by enrolling in a

**"I do know that I had the opportunity to become a much better student at Graceland."**

combined MD/PhD program, where he hopes to gain more experience in research and medicine. Stephen is grateful that Graceland challenged him to develop in new ways, beyond what he imagined.

# Mercy Nyambura Mugeche:

## Nursing

**M**ercy Nyambura Mugeche from Blue Springs, Missouri, is a senior nursing student on the GU Independence campus. Both of her parents are occupational therapists and the exposure to healthcare influenced her decision to become a nurse.

---

One of her goals is to travel abroad to do a mission nursing trip. Mercy believes nursing is a great way to impact people's lives and encourage others.

Graceland's instructors have encouraged and mentored Mercy. She said, "Professor Barbara Voshall has really wonderful lectures and such a soothing personality which really helps the learning process by making anxious students be calm and focused." She also mentioned that Professor Cindy Waits' use of a variety of engaging teaching methods in the classroom, such as incorporating videos and group work, encourages student participation in every lecture. Lastly, Associate Dean Sharon Little-Stoetzel, motivated Mercy with vast knowledge, high hopes and expectations to do her very best. Dean Sharon's Pharmaceutical class was a foundational learning experience for Mercy.

During one of her rotations, Mercy had a joyful patient who had a very challenging surgery and the women shared with her that humor was her key to get through the day with her tough life circumstances. As she cared for her patient, Mercy listened and realized that

**"I chose Graceland because I heard so many wonderful things about the nursing program."**

nursing isn't just about giving medications and putting in IVs; nursing is about helping and also taking the time to listen and to show patients that they truly do matter. Mercy feels her job as nurse is to teach her patients but it is important to remember her patients can teach her as well.

"I chose Graceland because I heard so many wonderful things about the nursing program. Graceland's NCLEX pass rate is more than admirable and the professors are always willing to go above and beyond to help students reach their potential. The accelerated 18 month BSN program strategically positions students for greatness by allowing them to graduate a semester earlier than other nursing programs which provides an exciting opportunity to get a head start on their careers. The vigorous coursework adequately prepares students for the real-world of nursing and makes students stand out in a very competitive job market."



# Kurt Van Kuiken:

## Athletic Training

Reigning from Lenexa, Kansas, Kurt Van Kuiken was recruited in 2010 to play soccer for Graceland University.

Soccer has been the one thing Kurt has felt passionate about his entire life, and he feels grateful that he got to follow in the footsteps of his older brother, who also played soccer at Graceland.

---

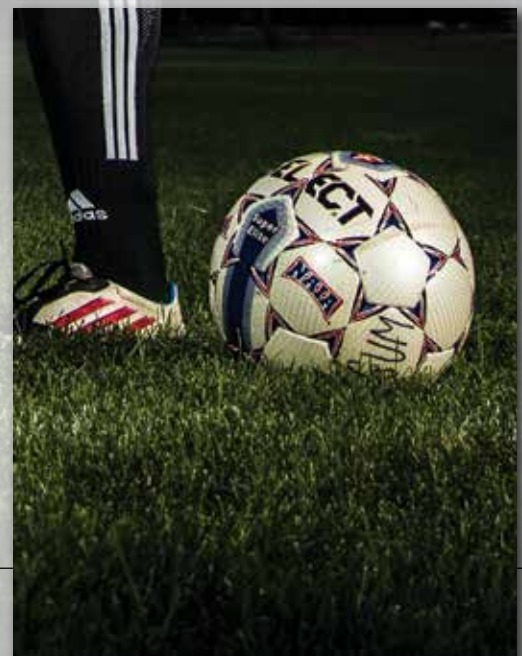
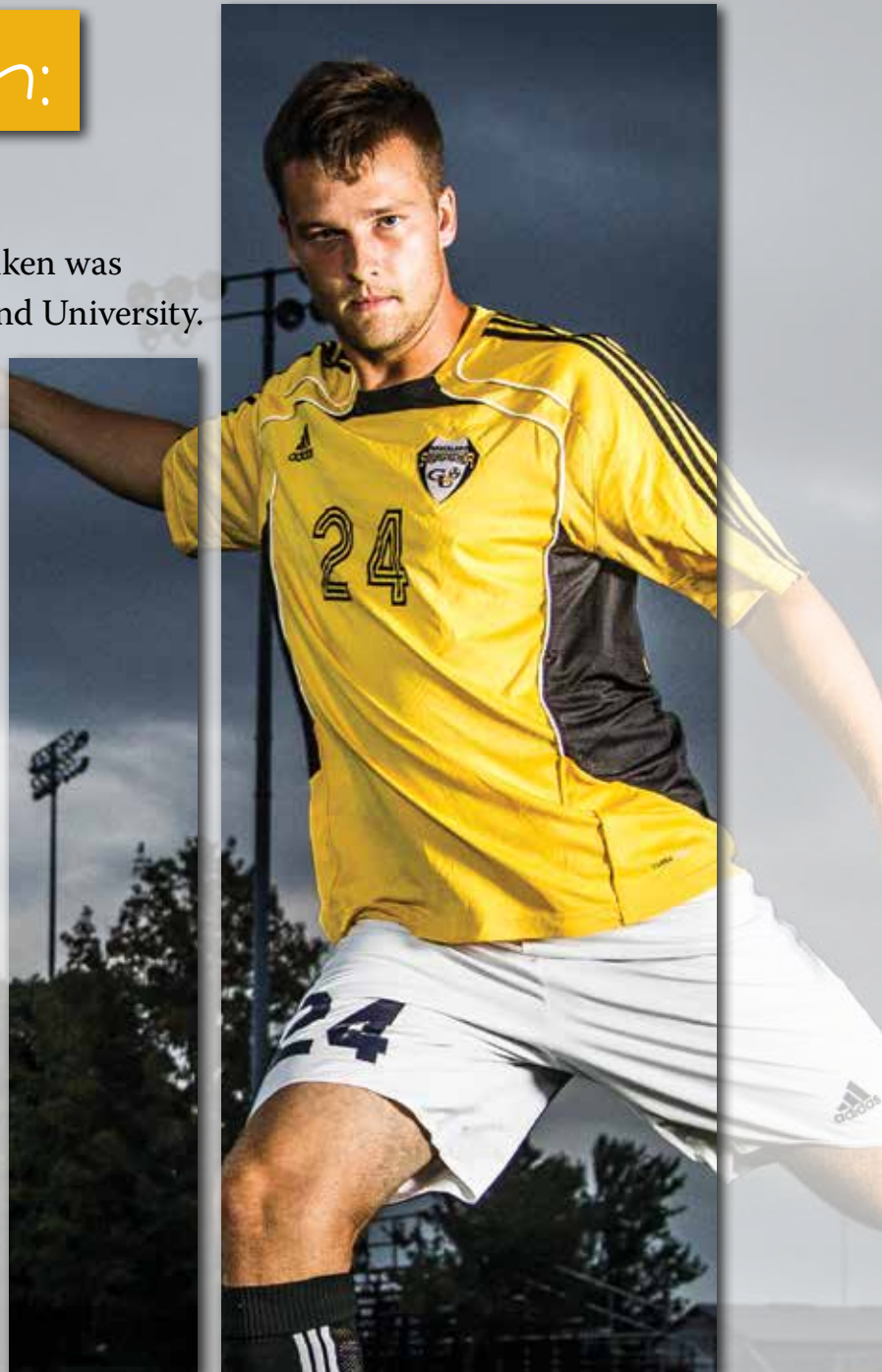
Graceland's soccer teams have a reputation of excellence and consistently have teams head to nationals.

While Kurt was certain he wanted to play soccer, like many new college students, choosing a major proved to be a more challenging decision. It wasn't until he took Introduction to Athletic Training with Diane Bartholomew that he knew the best fit for him. He declared an athletic training major and decided to add a minor in health. Since then, he has found a strong foundation of faculty members in his area of study.

“Every single person in the athletic training major really just wants to see students succeed. It goes beyond just the classwork; they'll drop anything to help someone out.”

While school and soccer keep Kurt very busy, he has still found time to get to know many students around campus and make lasting friendships. “At Graceland, you can sit down with anyone and strike up a conversation. The small community offers you a chance to know people you might not have otherwise,” said Kurt. “For example, half of my teammates are international students, so I get to learn about all of their different cultures. It's eye opening to hear about what's different between our countries and what people of other nationalities think of the United States.” The diversity and close-knit community that Graceland offers has broadened not only Kurt's knowledge of the world, but also has made his time here much more fulfilling.

Following graduation in December, Kurt plans to further his education, and he's looking forward to expanding his knowledge in the field. “With athletic training I still get to be in the competitive atmosphere,” Kurt explained. It's great to be a part of helping an athlete heal and get back to playing.” He hopes to find an internship for spring, and will be applying to graduate schools for Fall 2015.



# Tabitha Gonzalez:

## Visual Communication and Business Administration

**T**abitha Gonzalez is a confident and determined artist. Coming to Graceland in 2011 with several scholarships, including the Rio Grande Valley Texas Endowed Scholarship, she will graduate in December 2014 with degrees in Visual Communication and Business Administration.

Tabitha is excited about her future in the creative art world. She always knew she wanted to be an artist and attacks her education and career development with gusto.

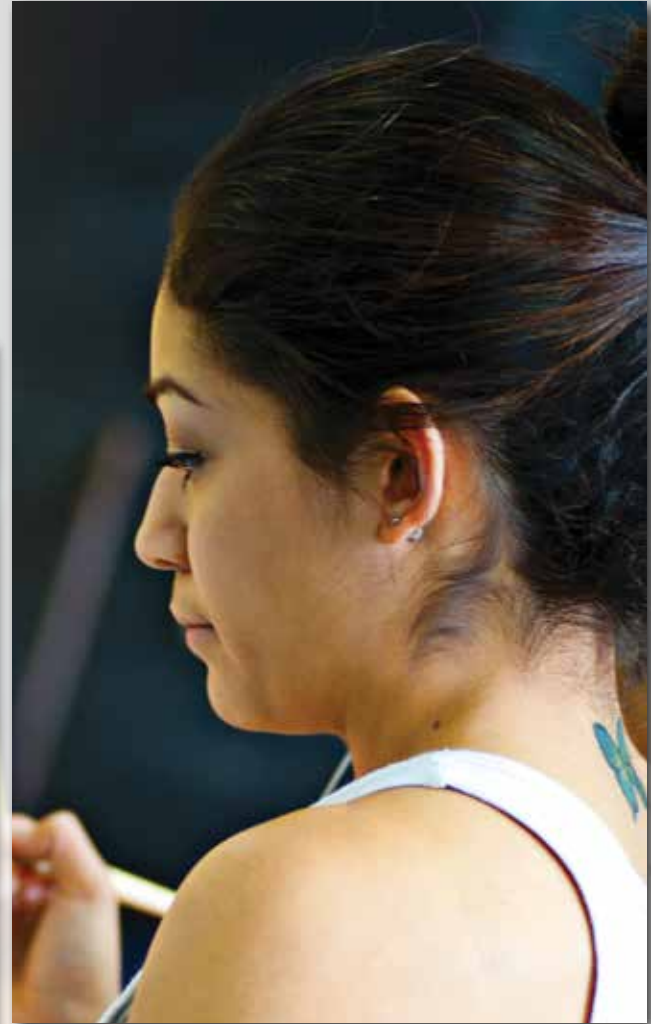
At Graceland she has diversified her artistic development from drawing to painting then to photography, while preparing herself for the business world as well. "Art has always been a love of mine, but never in my wildest dreams did I think it would get me this far! Ever since I was little, you could find my doodles on walls, homework, even napkins. Just ask my mom." Her confidence in her artistic skill along with her leadership development sets her apart on her way to becoming a successful artist in the business world.

Talent and determination have opened doors for Tabitha, and she has been given several opportunities to shine. "If not for Graceland, I wouldn't have the opportunities of becoming a freelance artist, art teacher, graphic designer, president of the art club, comic illustrator, fashion/beauty photographer or marketing intern, all of which motivate me to continue on this creative path. Graceland has given me the confidence to follow my dreams and continues to make a difference in my life." Tabitha painted a mural for the stairwell in the Helene Center for the Visual Arts, and another for the 2013 Community of Christ Peace Colloquy. Both are visually impacting,

**"Graceland has given me the confidence to follow my dreams and continues to make a difference in my life."**

large format paintings that demand attention. She prefers large format art and often focuses on portraiture.

Graduating in Visual Communications, Tabitha will present her senior art show during Graceland University Homecoming in October. The show will be a culmination, a cohesive large body of work, which will showcase her talent and give her experience in preparing an exhibition. She credits Graceland for the successful launch of her artist career in a competitive market.



## Christa Hill:

### Music and Elementary Education

Three years ago, Christa Hill of Oakdale, Minnesota, made the easy decision to come to Graceland University. “I had three main reasons that I wanted to go to Graceland; family, friends and church. I knew I would have a great experience here,” explained Hill. However, the inviting community wasn’t the only influential factor in her decision.

Christa has always been academically inclined, and it was important for her to feel challenged in the classroom. The Honors Program made that simple both academically and fiscally. With the option to take over 18 credit hours per semester, free of any additional charge, Christa is able to be as studious as she desires to be. This, in conjunction with the scholarships she earned, made Graceland a viable option for Christa. “Scholarships helped out a ton. I have received a number of scholarships and they add up pretty quickly. I also have a work study, which is even better. All of these things helped make Graceland more affordable,” Hill says, “It’s the best of both worlds!”

four years since her Music and Elementary Education majors don’t share many courses. This fall she will be taking 23 credit hours in order to graduate in May 2015. She will finish her practicum in the winter, and will fulfill her student teaching requirements in the spring. With her incredible work ethic, and the availability of personal advisors, Christa has been able to complete what would usually take five or six years, in four. Hill says, “My two majors don’t really overlap, but my advisor worked some sort of miracle and essentially took two five-year programs and was able to combine them into one four-year program. I’ve been very busy, but it’s doable.”

Despite all of her hard work, Christa still attributes a lot of her success at Graceland to the staff and how much they care about students. She really appreciates the amount of dedication and work that

**“The professors are really nice and you can tell that they care about you ... but they also want to challenge you.”**

Now, Christa is on the cusp of graduating. Originally, Hill was nervous that she wouldn’t be able to complete her degree in

professors and advisors lend to students. For Christa, it’s clear that Graceland has provided everything she could have wanted for her college experience.





GRACELAND  
UNIVERSITY



## Montel Evans: Elementary Education

Montel's enthusiasm for teaching is evident when he speaks about Graceland; he has found his passion. Graduating with an elementary education major in spring 2015, Montel will participate in the Professional Development School's (PDS) program for the 2014-2015 academic year.

PDS is a special program where Graceland partners with area school districts and Graceland's education students have the opportunity to spend the entire year in a classroom with a mentor teacher. They experience both how a teacher begins a classroom at the start of the year, with set up and planning, and how the teacher finishes the classroom at the end of the school year. These students participate in all professional development and teacher meetings with their mentor teacher. Pairing the students with a mentor teacher for a school year enables the student to witness the full spectrum of teaching.

Montel credits Graceland for his educational success. "I realized that the field of education was something I really wanted to pursue, and Graceland

has supported me along this path. My experiences at Graceland thus far have supported my creative and enthusiastic personality when it comes to educating the minds of others. The staff here has offered me some of the best support I have ever

**"I will cherish these moments as much as a child loves being recognized by the person whom they least expect."**

received through my higher education journey. A few standouts are Beth Gregory (my advisor) and Allison Dudley (MNEA Advisor). These two ladies have enriched me with a wealth of knowledge I will remember through the course of my future career. I lean heavily upon their words and

their guidance as I continue to reach my goals in the Graceland University School of Education.

I rave about this program to my co-workers and other aspiring teachers. I am so glad that I took a leap of faith,

with support from my wife, to give this program my all. I will cherish these moments as much as a child loves being recognized by the person whom they least expect. It is experiences like these that make one's inner child feel like his dreams are manifesting."

# Home

away from  Home

*Scott Farnsworth*  
Campus Housekeeping Crew Leader  
I'm part of the campus cleaning crew for us starts at five in the morning for my job; from helping a blind student in class, to taking students to Betts, proofreading my student work, I get that level of friendship and love about this place.

As alumni, we can look back on our time at Graceland and, if there's one common thread for all of us, we hold the iconic "Graceland Experience" close to our hearts. So many memories. Life-long friendships. Opportunities. Challenges. Self discovery.

As a student, I never gave it much thought. This was my home away from home, and I just expected things to be as they were. It never occurred to me that the housekeepers were coming in at five in the morning to get all of the buildings unlocked and ready for the day ahead, or that the grounds crew was working 48 hours straight in the winter to make sure I could get from Walker Hall to my classes in Briggs or a game in Closson. It's like looking at a clock and seeing the hands move, but you don't see all of the inner workings that make it tick.

My perspective really changed when I transitioned from student to professional. Being a Graceland employee is like being part of the inner workings of a clock. We all have an intricate role in making the lives of the students successful, so they can feel at home here. The daily tasks we do – however large or small, ordinary, extraordinary or downright peculiar – directly impact the quality of life for the students. Helping students to succeed goes beyond work – it becomes a calling. We become so much more than our role as housekeeper, recruiter, chef, librarian, nurse, campus maintenance supervisor or counselor. That's what ultimately makes the "Experience" possible, and makes Graceland home.

~Tiffany Smith '06  
Senior Graphic Designer (9 years)

*Kevin Brown*  
Director of Admissions  
(17 years)

*I love working with prospective students to offer them another chance, and to embrace the opportunity to be more productive in their life. I work with students and their families through the admissions process and educate them on what Graceland University has to offer. I help them realize their potential as they step into their collegiate career and help them understand what they will need to do to be successful.*

*Lauren Youngs, M.S.*  
Personal Counselor (2 years)

*I provide counseling to students who are dealing with emotional concerns such as grief, anxiety, relationship issues and depression. This can be a challenging time for young adults and sometimes counseling can help students create strategies to deal more effectively with life's challenges. I also develop prevention education on campus to help students make healthy decisions and engage in the Graceland community.*

leader (17 years)  
y crew and a normal day  
ing. I see everything as  
udent get to her next  
hany for groceries, even  
ers' papers. I've seen that I  
d support back. That's what I

*Darrin Dickerson*

General Manager & Executive Chef, Sodexo  
(17 years)

I lead the entire Sodexo staff for Graceland's food service. Together, we strive to exceed the dining expectations of our students through each of the 14,000 meals served per week. Our staff interacts with each student as many as 19 times a week, which gives us the chance to get to know their likes and dislikes. We are constantly listening and adjusting our services to make our students' dining experience better than they could get anywhere else.



*Carrie Wade*

F.M. Smith Library Director (July 2014)

I didn't realize that part of being the library director at Graceland also meant being a barista until I had to fire up the coffee pots downstairs to fuel students through long nights of studying. While the sofas and comfy chairs we have throughout the building help create a welcoming environment, it's important to my staff and me to project an open and friendly vibe to anyone who comes in the library.

*Bob Kelly*

Campus Maintenance Supervisor (38 years)

With five guys on my crew, along with student workers, we take care of all of the grounds maintenance, setups like Commencement and Homecoming, fleet vehicles, and moving furniture around the campus. My main source of pride over the years has been all of the students who have worked for me, some even second generation. Those close family ties and the friendships made are what has made my time here so special.



## Athletics at Graceland: A Perspective

Graceland's liberal arts education provides high impact learning experiences that help inspire students for lifelong learning. Sports, classes, performances, labs, church, house functions and all of what make up the "Graceland Experience" are part of the necessary curriculum for students.

The athletes at Graceland are in the classroom on and off the field, developing skills for life. Stew McDole, Head Coach for Women's Volleyball, Professor of Leisure Sciences and Associate Athletics Director, shares his insight on broadening our perspective toward curriculum definitions. He characterizes Graceland's liberal arts approach in more direct and practical terms.

"Graceland is, has been, and will continue to be a highly regarded institution whose core decision making is driven by a liberal arts commitment to its students. While occupational skills are critical, Graceland sees its core role in doing everything it can to further develop tools already in the "kit" (from parents, school and life experience) by adding a variety of additional life skills to the repertoire. Looking 10, 15,

**"...we want to be standing shoulder to shoulder with moms and dads, and be in awe of the successful lives carved out by our shared charges."**

20 years from now, we want to be standing shoulder to shoulder with moms and dads, and be in awe of the successful lives carved out by our shared charges. Ultimately, we want to feel that we had some part in their success. While class settings are at our center, we nonetheless know that many important life skills are more readily attained in applied learning environments. Graceland's curriculum is much more pervasive in college life than we think. Each of the various elements is intentionally curricular... classes, the dance team, house council, Enactus, tennis, etc. They are among the essential settings within which we help students develop that critical set of life tools."

~Stew McDole



## Friday, October 17, 2014

11 a.m.	Baseball Alumni Golf Tournament – \$30 entry fee.	
1–8 p.m.	Homecoming Registration	Helene Center Atrium
1 p.m.	Alumni & Friends Golf Tournament Registration \$35 entry fee. Play starts at 1:30. (Benefits GU golf programs)	Lamoni Golf Course
5 p.m.	15th Annual Alumni Emeriti and Awards Banquet (please pre-register) Class of 1963 and earlier.	Shaw Center Lobby
5:30 p.m.	Women’s Varsity Basketball vs. Alumni	Closson Center
6 p.m.	Women’s Varsity Softball vs. Alumni	North Park
7 p.m.	Kekailoa Palea ‘08 Alumni Art Show and Reception	Helene Center, The Constance Gallery
7:30 p.m.	Men’s Varsity Basketball vs. Alumni	Closson Center
7:30 p.m.	Homecoming Musical <i>Into the Woods</i>	Shaw Family Auditorium
10:30 p.m.	30th Annual Student Airband Competition	Closson Center

## Saturday, October 18, 2014

8:30–4 p.m.	Homecoming Registration	Helene Center Atrium
9 & 10 a.m.	Concert Choir and Chamber Singers Concert	Shaw Center, Carol Hall
9 a.m.	Sustainable Good for Poverty OI 5K Run/Walk	University Place turn-around
9 a.m.	Social Clubs Reunion	Memorial Student Center, Americas Rooms
9 a.m.	Agape House Meet and Greet with Sweets	Gunsolley Hall Main Lobby
10 a.m.	Alumni Association Forum	Shaw Center Amphitheatre
10 a.m.	Women’s Varsity Volleyball vs. Alumni	Closson Center
10 a.m.	Women’s JV Soccer vs. Alumni	“The Razz”
10–noon	Solah Alumni Brunch	Walker Hall, Third Floor
11 a.m.	Men’s JV Soccer vs. Alumni	“The Razz”
11 a.m.	Men’s Varsity Volleyball vs. Alumni	Closson Center
11 a.m.	Football-Soccer Pep Rally	Shaw Center Amphitheatre
11 a.m.	Homecoming Court Crowning	Shaw Center Amphitheatre
11:30–1:30 p.m.	BBQ Tailgate Party	Campus Quad
11:45 a.m.	Students and Alumni Tug of War House Competition	Campus Quad
Noon	Yellowjacket Jazz	Shaw Center Amphitheatre

# HOMECOMING 2014

HONORING  
THE PAST  
*Homecoming*  
RE



1 p.m.	Drumline Performance	Shaw Center Amphitheatre
1-2 p.m.	Graceland Players Improv Troupe	Shaw Center, JR Theatre
1:30 p.m.	Shaw Center Art Gallery Tour	The Gallery at Shaw Center
1-5 p.m.	Hanthorne Open House Celebrating 20 years	Tess Morgan Residence Hall, Lower level
1-4 p.m.	Emeriti, Class of '54, Class of '89 Hospitality Room	Memorial Student Center, Americas Rooms
2 p.m.	Homecoming Football Game vs. Central Methodist \$5 Adults/\$3 Senior Citizens and Visiting Students w/ID Children 12 and Under, GU Faculty, Staff and Students w/ID are Free	Huntsman Field
3 p.m.	Music Department Recital	Shaw Center, Carol Hall
3-5 p.m.	16th Annual Bill & Lois Russell Hosted GALA Reception	Lamoni
5 p.m.	Class of 1964 Honor Class Dinner	Higdon Administration Building, Harpham Heritage Chapel
5 p.m.	Honor Class Dinners	Shaw Center Lobby
5:30 p.m.	Women's Varsity Soccer vs. Baker	"The Razz"
6:30 p.m.	The Morticians Concert Celebrating 50 years	Memorial Student Center, Main room
7:30 p.m.	Homecoming Musical <i>Into the Woods</i>	Shaw Family Auditorium
7:30 p.m.	Men's Varsity Soccer vs. Baker	"The Razz"
9:30 p.m.	Graceland's Got Talent...Homecoming Edition (Alumni are encouraged to perform. Contact Alumni Programs at 866-484-3837)	Memorial Student Center, Main room

## *Sunday, October 19, 2014*

8 a.m.	Crescent Breakfast and Garden Dedication	Higdon Administration Building, Harpham Heritage Chapel
10:30 a.m.	Homecoming Worship Service	Shaw Family Auditorium
11:45 a.m.	The President's Brunch (Presidential Society members only)	Memorial Student Center, Main Room
2 p.m.	Homecoming Musical <i>Into the Woods</i>	Shaw Family Auditorium

## *Honor Class Dinners*

Honor Class Dinners except the 50 year will begin at 5 p.m. on Saturday, October 18, in the Shaw Center Lobby. Tickets are required at \$25 per person and may be purchased online or at Homecoming Registration in the Helene Center Atrium during Homecoming. Day care will be available 4:30 - 11 p.m. at Funshine Learning Center, 423 N. Walnut, Lamoni.

# Graceland University

## Performing Arts Series

2014-15

What do an instrumental group from Brazil, a troupe of acrobats from China, a quintet of singer/musicians from Ireland and the longest existing touring company of actors performing “To Kill a Mockingbird” all have in common?

Well, just in case you haven't already discovered, these are the acts that will fill the bill for the 2014/15 Graceland University Performing Arts Series (PAS) season. The PAS link on the Graceland website ([www.graceland.edu/pas/](http://www.graceland.edu/pas/)) has extensive details and video links for each group for your review.

Tickets for each of these events are currently on sale. All tickets can be obtained online at the Graceland website listed above and will also be available at a special booth on campus for Homecoming weekend.

This season promises to be especially memorable. In addition to the performances, there will be two matinee presentations for local school children and two workshops for Graceland students as well as a select group of high school students from as far away as Indianola, Iowa. As Lee Bash, Director of the PAS notes, “This season is going to represent an incredible array of global diversity with some extraordinary groups that are sure to impress, excite and amaze our audience. I hope you can join us and be a part of all the fun!”



OCT  
31  
2014

**SpokFrevo  
Orchestra**  
7:30 p.m.



FEB  
15  
2015

**The Peking  
Acrobats**  
2:30 p.m.



FEB  
27  
2015

**Caladh Nua**  
7:30 p.m.



APR  
1  
2015

**To Kill a  
Mockingbird**  
7:30 p.m.



Community of Christ President, Steve Veazey and Graceland President, John Sellars are surrounded by grant and scholarship winners.

## SPECTACULAR 2014 “BEYOND”

was held on the Lamoni campus of Graceland University in July. This incredible camp sponsored by the Community of Christ caused my social media to explode with status updates on Facebook. The words and phrases that keep cropping up are “inclusive community,” “life-changing,” “eye-opening,” and “unforgettable.” Both campers and staff recount their experiences of learning and growing in community together with people from all over the world.

As I read these testimonies, I am reminded that these shared reflections are what make Graceland University a special place as well – that those values we embody at SPECTACULAR every year are the same values that Graceland University upholds. Graceland’s new developments specifically reflect those values and are being physically manifested: the Graceland Sustainability Program has a Hoop House that grows food for the Commons, and keeps food local with the goal of reducing our carbon footprint. This new development helps empower students to make more environmentally-conscious choices and to contribute to those efforts themselves.

Many Graceland students are involved in the Outreach International Club and commit countless hours to projects that benefit communities near and far. The personal relationships faculty and staff

**...those values we embody at SPECTACULAR every year are the same values that Graceland University upholds.**

have with their students and among each other, the thriving student government and student leadership opportunities, the responsibility students take for their

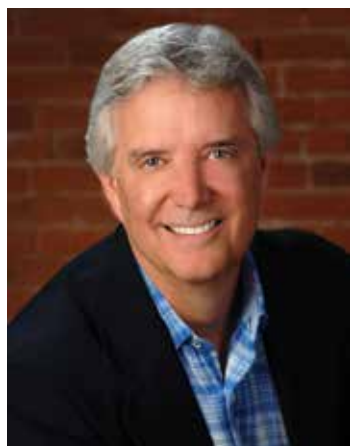
education and the shaping of their own “Graceland Experience” - these are what Graceland values and fosters.

Graceland University empowers its students to create meaningful and successful lives, while allowing them to discover and define for themselves what that means. The challenge of SPECTACULAR is the same challenge Graceland University asks of its students, “You must be the change you wish to see in the world.” SPECTACULAR shares a vision with youth from all over the world of what the world could be like; while Graceland University strives to help its students find the tools to make that vision a reality.

~Chelsea Tobin



# Meet Dr. Harry Ashenhurst, Board of Trustees Chair



At the May meeting of the Board of trustees Dr. Harry Ashenhurst was elected the new Chair of the Board. Harry has been a trustee of the board since August 2012. A Graceland graduate in 1970, Harry spent the early years of his career working for the Community of Christ. In the early 1980's Harry moved into the business world and spent the last twenty years of his career in a variety of senior executive roles with Lennox International, based

out of Dallas, Texas. He spent time as the President/COO of the worldwide refrigeration business and retired in late 2007 as the Chief Administrative Officer of the corporation.

Harry's academic background includes a Master of Divinity from St. Paul School of Theology, and an MA and PhD from the

University of Missouri, Kansas City. He is a licensed Psychologist. Harry has also served as Chair of the Board of Directors for Outreach International for over 15 years.

When asked, "What is it that Graceland does best?" he replied, "Graceland is a unique place where we build a holistic learning community that provides opportunity for our students to be successful citizens in the world. As our students move into their chosen paths in life they do so with a solid base of values and good decision making skills. Graceland helps establish a foundation where people become life long learners, capable of responding successfully to all of life's challenges and opportunities. This is what we do best. Our opportunity is to continue and strengthen this learning community, evolving and growing as we respond to the changes needed and at the same time preserving the very best of our community experience."

President Sellars welcomes Harry to the position and said, "With the experience and knowledge that Harry brings, Graceland's Board of Trustees will continue their momentum for a bright future."

## Class Notes

### The 1940s

**Bob Laudie '40** kept a Christmas card and photos tucked away for 70 years. He hoped to someday connect with the child of his war-time friend "Andy," and deliver the card. With the help of historians, he finally was able to make the connections and found the daughter in Iowa City. Read this heartening story about a Graceland graduate at <http://icp-c.com/1h3TXq9>

### The 1960s

**Gary N. McLean '61** has been appointed "Renowned Scholar" by the Graduate School of Business in the International Islamic University of Malaysia, Kuala Lumpur, from mid-June to mid-December. He will teach courses in the MBA program and assist doctoral students and faculty with their research.

**David '64** and **Sharyn Higgins '68 Wiley** worked in Honduras for Project Happy Teeth last year for 3 weeks. They winter in Florida and minister in the Palm Bay Community of Christ congregation. They volunteer with the Salvation Army and other groups in the community.

## We want your class notes!

### Submission Guidelines

#### ► Upcoming Deadline

Winter 2014: November 2014 (publication month: January 2015)  
Spring 2015: March 2015 (publication month: May 2015)

#### ► How to Submit Class Notes

**Email:** Email your notes to [alumni@graceland.edu](mailto:alumni@graceland.edu)  
(Subject line: Class Notes "year")

You may mail your news to:

**Class Notes**  
Alumni Office  
1 University Place  
Lamoni, IA 50140



Stay connected to the latest *Horizons* news:

Join us on [Facebook.com/GracelandUniversity](https://www.facebook.com/GracelandUniversity)

& follow us on Twitter [@GracelandU](https://twitter.com/GracelandU)

### The 1970s

**Susan (Jeschke) Calloway '73** was inducted as one of 73 Fellows of the American Academy of Nurse Practitioners at the annual AANP meeting in Nashville, TN in June 2014. Inductees must demonstrate outstanding achievements in teaching, research and policy to be selected for this honor.

**Lucy W. Weber '79** retired from teaching after 33 years as an educator and now works for Travis County Parks/Nature Preserve. She accompanied Max Pitt and his group of students to Nicaragua

to do service projects with Outreach International during January 2013.

"What a great way to reconnect with Graceland people!"

### The 1980s

**Erik '84** and **Carla Sacry '84 Nilsen** shared, "three of our four children have attended Graceland. Our son Bryn is a sophomore at Graceland and Ryan is looking at GU too! We couldn't be happier. Our oldest, **Andrew '10**, and his wife, **Emily Allen '11 Nilsen**, are heading to Nicaragua for 27 months to serve in the Peace Corps."



## The 1990s

---

**Michael "Bill" Dearman '91** earned his 500th career win as a Head Volleyball Coach at Highland Park High School in Dallas, Texas.

## Weddings

---

Christopher Mize and **Jessica Hammond '13**, Liberty, Missouri, September 7, 2013.

Adam Morrow and **Nicole Piedimonte '08**, Lees Summit, Missouri, May 24, 2014.

Terrence Fulton and **Michelle Perria '01**, Blue Springs, Missouri, July 12, 2014.

## Anniversaries

---

**Those celebrating 50 years or more.**

**Edward (Eddie) '53** and **LaVeta Rae Miller '54 Boehm** celebrated their 60th wedding anniversary on September 3, 2013 in Culver, Indiana.

**Daniel '59** and **Laura Markey '59 Gollnick** celebrated their 52nd wedding anniversary on October 21, 2013 in Altadena, California.

**Larry '62** and Mary Lou **Sturgis** celebrated their 50th wedding anniversary on May 30, 2014.

**Myron '61** and **Nancy Borland '62** Calhoun celebrated their 60th wedding anniversary on June 14, 2014.

Howard and **Frances Raw '42 Vaughan** will celebrate their wedding anniversary on September 6, 2014.

## Births

---

John and **Sarah Pyfferoen '06 Dugan**, Glendale, Arizona. Emma, born December 21, 2012.

**Jeff '98** and **Shara Barbour '06 Matlock**, Memphis, Tennessee. Lainey Joy, born January 23, 2013.

Jeff and **Julie Birks '06 Shaw**, Independence, Missouri. Joscelyn Dakota, born March 21, 2013.

**Jeffrey Foreman '05**, Indio, California. Hailey Marie, born December 1, 2013.

**Chad '07** and **Brittany Everett**, Lexington, North Carolina. Potter Ann, born May 21, 2014.

## In Memoriam

---

**Charles L. Hughes '55**, Garland, Texas, September 29, 2010.

**Wilma Redfield '55 Warnock**, Everett, Washington, January 2, 2013.

**Ronald E. Hansen '64**, Kansas City, Missouri, April 14, 2013.

**Bryan J. Hill '48**, Evansville, Indiana, October 25, 2013.

**Shirley Ratcliffe '51 Marlowe**, Grain Valley, Missouri, December 1, 2013.

**Bruce A. Moore '74**, Scottsdale, Arizona, January 6, 2014.

**John M. Decker '56**, Surprise, Arizona, March 26, 2014.

**Nancy McMichael '64 Jarvis Vogel**, Bates City, Missouri, April 7, 2014.

**Thomas J. Cooper '58**, Huntington Beach, California, April 15, 2014.

**Ruth Grice '69 Daugherty**, Independence, Missouri, April 23, 2014.

**Joel A. Yates '84**, Bluffton, South Carolina, April 28, 2014.

**Mae Collet '46 Pearson**, Midland, Michigan, May 1, 2014.

**Harry C. Ballantyne '55**, Sykesville, Maryland, May 2, 2014.

**Chester D. White '56**, Lamoni, Iowa, May 3, 2014.

**Raymond W. Huggett '53**, Independence, Missouri, May 4, 2014.

**Rochelle Hall '38 DeBardelaben Wamble**, Pensacola, Florida, May 5, 2014.

**Laura M. Vickrey '46**, Mobile, Alabama, May 6, 2014.

**Eugene L. Payton '48**, Independence, Missouri, May 8, 2014.

**Sadie Rose Bishop '43 Bolie**, Des Moines, Iowa, May 12, 2014.

**C. Wally Cheesebro '67**, Aztec, New Mexico, May 13, 2014.

**Clarence P. Lannum '48**, Freeport, Ohio, May 14, 2014.

**Frank S. Hough '59**, Lamoni, Iowa, May 18, 2014.

**Marilyn L. Miller '50**, Greensboro, North Carolina, May 22, 2014.

**Jackie Ching '62 Allen**, Lamoni, Iowa, May 26, 2014.

**Dale M. Foster '56**, Idaho Falls, Idaho, May 29, 2014.

**Lawrence V. Agnew '62**, Saint Paul, Minnesota, June 2, 2014.

**Margaret Booth '64 Dickerson**, Fremont, California, June 3, 2014.

**Daniel O. Long '59**, Lamoni, Iowa, June 13, 2014.

**Kent W. Bennetts '51**, Olathe, Kansas, June 19, 2014.

**Warren L. Gose '49**, Independence, Missouri, June 23, 2014.

**V. Eloise Goodwin '45 Hargrove**, Salem, Oregon, July 1, 2014.

**Laverne A. Wintermeyer '41**, Des Moines, Iowa, July 1, 2014.

**Rebecca A. Ziegenhorn '72**, Boynton Beach, Florida, July 2, 2014.

**Clifford D. Carpenter '45**, Blythedale, Missouri, July 7, 2014.

**Brian P. Jones '71**, Independence, Missouri, July 17, 2014.

**F. Carl Mesle '34**, Independence, Missouri, July 23, 2014.



**N**orman E. Swails '50, was awarded 2014 Heartland Humanitarian of the Year. Each year the Truman Heartland Community Foundation (THCF) recognizes individuals and companies who have had a significant impact on Eastern Jackson County, Missouri, making the community a better place to live and serve. Norman's leadership and involvement in philanthropy has resulted in successful expansion efforts of many community organizations including Hope House, Sunshine Center, Community Services League and The Truman Presidential Museum and Library. While serving as the Presiding Bishop for the Community of Christ, he led the fundraising efforts for the new Temple and was instrumental in merger of the Independence Regional Health Center Foundation with the Independence Community Foundation resulting in the formation of Truman Heartland Community Foundation.



GRACELAND  
UNIVERSITY  
1 University Place  
Lamoni, Iowa 50140  
www.graceland.edu

NON-PROFIT ORG.  
US POSTAGE  
**PAID**  
DES MOINES, IA  
PERMIT NO. 972

ELECTRONIC SERVICE REQUESTED

TIME SENSITIVE MATERIAL

# Graceland University

**JANUARY  
12 - 21, 2015**

## EXPERIENCE THE HOLY LAND Alumni & Friends Trip 2015

*For 10 years,  
it has been a  
tradition for  
Graceland to  
invite our alumni  
and friends to  
travel together.*

In January 2015 we embark on Israel and Jerusalem and the many places where our Lord walked and taught during His earthly ministry.

We invite you to join us on a visit to places where many faiths took their roots. Join us in January 2015 on a trip of a lifetime. Let's do this together.

**John Sellars, PhD, CPA**  
PRESIDENT

**David Schaal**  
VICE PRESIDENT FOR STUDENT LIFE

### TRAVEL SITES

- Jerusalem • Bethlehem
- Sea of Galilee • Qumran
- Nazareth • River Jordan
- Capernaum • Caesarea
- Megiddo • Upper Room
- Garden of Gethsemane
- Via Dolorosa

### ALL-INCLUSIVE PACKAGE

- Deluxe motorcoaches
- Guided sightseeing by licensed guide
- Entrance fees to sites visited
- First class/4-star hotels
- Buffet breakfast & dinner daily
- Hotel gratuities
- Program fees
- Fuel surcharges and government taxes (subject to change)
- Roundtrip airfare (additional baggage and airline fees may apply)
- Group transfers to/from Tel Aviv Airport

### FOR MORE DETAILS

Contact  
Bill or Mary Pennington  
Florida Vacations  
(Baldwin, Maryland)

**443-249-8200**